

Two Strangers in Europe – Sparassidae Recently Discovered in England and Belgium (Araneae: Sparassidae)

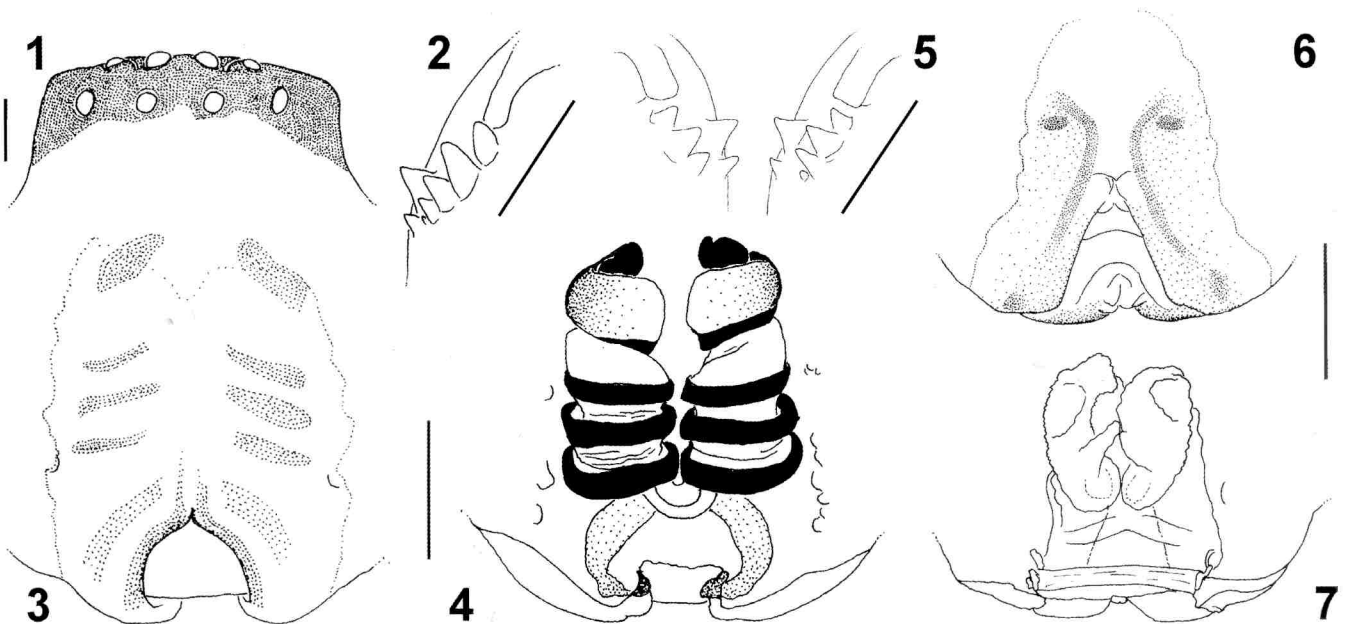
by Peter Jäger

From time to time, spiders are introduced into European countries. Amongst these are representatives of the spider family Sparassidae, which are originally from tropical and subtropical regions (except for the Palaearctic *Micrommata* Latreille, 1804). To date, the following introduced Sparassidae have been identified from adult specimens [with country of origin and reference in brackets]: *Barylestis montandoni* (Lessert, 1929) [Congo, Uganda; Schmidt, 1971: sub *Torania montandoni*], *B. occidentalis* (Simon, 1887) [Congo, Uganda, Sudan; Schmidt, 1971: sub *Torania occidentalis*], *B. scutatus* (Pocock, 1903) [Cameroon; Browning 1954: sub *Torania scutata*], *B. variatus* (Pocock, 1899) [West Africa; Browning, 1954: sub *Torania variata*], *Heteropoda venatoria* (Linnaeus, 1767) [cosmopolitan; e.g. Jäger, 2000], *Olios antiquensis columbiensis* Schmidt, 1971 [Colombia; Schmidt, 1971], *O. banananus* Strand, 1915 [Congo; Schmidt, 1957], *O. corallinus* Schmidt, 1971 [Ecuador; Schmidt, 1971], *O. rubripes* Taczanowski, 1872 [French Guiana; Schmidt, 1971], *O. rufus* (Keyserling, 1880) [Colombia; Schmidt, 1971], *Tychicus longipes* (Walckenaer, 1837) [Indonesia: Amboina; Hasselt, 1872: sub *Olios longipes*]. Most of these were accidentally introduced with cargo, like fruit, from tropical countries and persisted for only a short time, i.e. did not establish viable populations. Two new records of introduced Sparassidae are presented here.

One adult female sparassid was found on the pavement in London (Figs. 1–4; Isle of Dogs, near Island Gardens D.L.R. station, 17th November 2004, Ken Greenaway leg., PJ 2146, to be deposited in the Senckenberg Museum, Frankfurt). The author identified it as an *Olios* sp., belonging to a group close to *Olios hirtus* (Karsch, 1879). Representatives of this group are mainly characterised by their genital structures: the female duct system is composed of two parallel screw-like structures, in which intromittent and fertilisation ducts are wound around an axis parallel to the body length axis (Fig. 4). The epigyne consists of a membranous semi-circular part adjacent to the epigastric furrow. The internal duct system is visible through the cuticle (Fig. 3). Males have a screw-like embolus with a furcate tip and a pronounced tegular apophysis (Jäger, 2001: figs. 2f-g). Specimens show distinct leg annulations, with the femora typically marked with small spots, and exhibit a darker ocular region (Fig. 1). The species-group is distributed from India and Sri Lanka in the west, to Sumatra and Java in the south-east, and to southern China in the north-east.

This particular female could not be determined to species level, as the species-group is unrevised and only a small number of specimens could be examined, mostly single individuals. Thus, no statements can be made regarding intraspecific variation and validity of nominal taxa. For the former reason and since the type locality is unknown, I refrain from describing it as new species. It will be included in a later revision of this group.

The second case concerns an adult female sparassid recently recorded in Belgium (Figs. 5–7; Belgium, Flanders, Tessenderlo, Gerhagen: Houterenberg-Pinnekenswyer, Luinruy-heath, 29th



Figures 1-4: *Olios* sp. 1 Eye arrangement, dorsal; 2 cheliceral dentition, ventral; 3 epigyne, ventral; 4 vulva, dorsal. Figures 5-7: *Cerbalus* sp. 5 Cheliceral dentition, ventral; 6 epigyne, ventral; 7 vulva, dorsal. Scale bars = 1 mm.

June 2000, FS. 45, PJ 2147, coll. M. Janssen). The specimen was caught in a nature reserve with a pitfall trap, which was placed at the entrance of a rabbit hole on a sand dune, partly overgrown with *Calluna* heath and *Deschampsia* spp. grass. Together with this single female the following species were also recorded: *Zelotes petrensis*, *Zora spinimana*, *Atypus affinis*, *Trochosa terricola*, *Pardosa lugubris*, *Xerolycosa nemoralis*, *Tegenaria agrestis*, *Tegenaria atrica*, *Walckenaeria atrotibialis*. This specimen was identified as belonging to the genus *Cerbalus* Simon, 1897.

At present seven *Cerbalus* species are known from northern Africa, Canary Islands and Israel. The female found in Belgium could not be assigned to one of the known species, but its genitalia closely resemble those of *C. psammodes* Levy, 1989 from Israel. However, females of the following species are unknown: *C. alegranzaensis* Wunderlich, 1992 (Canary Is.), *C. ergensis* Jäger, 2000 (Tunisia) and *C. pellitus* Kritscher, 1960 (Egypt).

Initial points of introduction for spiders are rarely documented, but known for *Holocnemus pluchei* (Scopoli, 1763) (Jäger, 1995, 2000) and *Zimiris doriai* Simon, 1882 (Jäger, submitted), both found in Cologne. Whilst in these two cases, populations have either established (*H. pluchei*) or are likely to be able to do so, as reported from other countries (*Z. doriai*; Platnick & Penney, 2004), it seems unlikely that the *Olios* and *Cerbalus* presented here have done so, as only singletons were found. Without doubt, *H. venatoria* is the front-runner and has become established as the only tropical sparassid in various countries in zoos and greenhouses (e.g. Jäger, 2000).

The introduction routes for the two species reported in this article are unknown. However, the *Olios* specimen is likely to have been shipped with cargo from Asia to import halls in London, whereas the route taken by the Belgium *Cerbalus* is difficult to speculate on.

Thanks are due to Marc Janssen (Meeuwen), Ken Greenaway (London), Edward Milner (London) and John Murphy (Hampton) for sending the spiders to Frankfurt and providing information on the specimens and their localities.

References

- Browning, E. (1954) The accidental importation of three species of *Torania* into Great Britain, with observations on live specimens (Araneae: Sparassidae). *Proc. zool. Soc. London*, **124**(2): 213–217.
- Hasselt, A. W. M. van (1872) Wetenschappelijke mededeling tijdens de wintervergadering der Nederlandsche Entomologische Vereeniging, gehouden te Leiden den 23sten december 1871. *Tijdschr. Ent.*, **15**: lxii–lxvi.
- Jäger, P. (1995) Erstnachweis von *Holocnemus pluchei* und zweiter Nachweis von *Nesticus eremita* für Deutschland in Köln (Araneae: Pholcidae, Nesticidae). *Arachnol. Mitt.*, **10**: 20–22.
- Jäger, P. (2000) Selten nachgewiesene Spinnenarten aus Deutschland (Arachnida: Araneae). *Arachnol. Mitt.*, **19**: 49–57.
- Jäger, P. (2001) Diversität der Riesenkrabbenspinnen im Himalaya. Über eine Radiation zweier Gattungen in den Schneetropen. (Araneae: Sparassidae: Heteropodinae). *Cour. Forsch.-Inst. Senckenberg*, **232**: 1–136.
- Jäger, P. (submitted) *Zimiris doriai* SIMON 1882 (Araneae: Prodidomidae), erstmals eingeschleppt nach Deutschland. *Arachnol. Mitt.*
- Platnick N. I. & Penney, D. (2004) A revision of the widespread genus *Zimiris* (Araneae, Prodidomidae). *Amer. Mus. Novitates*, **3450**: 1–12.
- Schmidt, G. (1971) Mit Bananen eingeschleppte Spinnen. *Zool. Beitr.* **16**: 387–433.
- Forschungsinstitut Senckenberg, Senckenberganlage 25, D-60325 FRANKFURT AM MAIN; e-mail: Peter.Jaeger@Senckenberg.de

***Saitis lusitanicus* Simon, 1901 is a junior synonym of '*Euophrys*' *difficilis* (Simon, 1868) (Araneae: Salticidae)**

by **Dmitri V. Logunov**

Mediterranean Salticidae, particularly from the western region, have been poorly studied. Taxonomic notes and the synonymy of two little-known salticid species are provided herein. The material studied was borrowed from the Muséum National d'Histoire Naturelle, Paris, France (MNHN; curator: Dr C. Rollard). I wish to thank Dr C. Rollard for access to the collections, Dr T. Kronstedt (Stockholm, Sweden) for help with obtaining E. Simon's original descriptions and Dr D. Penney (Manchester, UK) for his kind linguistic help.

'*Euophrys*' *difficilis* (Simon, 1868)

Figs. 1–5

Attus difficilis Simon 1868: 590 (D♂♀; in the MNHN; ♂ syntype, examined).

Saitis lusitanicus Simon, 1901: 67 (D♂; in the MNHN; examined). **New Synonymy.**

For a complete reference list see Platnick (2004) and Prószyński (2003).

Material examined: COUNTRY (?): 1♂ (MNHN, 847; the lectotype of *Attus difficilis*; designated here), "Cr. Sic. Dalm." [apparently Croatia, Sicily and Dalmatia; at least the two last names are mentioned in Simon (1937: p. 1252) and "Sicile" is mentioned in the original description (Simon, 1868: p. 591)]. – PORTUGAL: 1♂ (MNHN, 13676; the holotype of *Saitis lusitanicus*), "Porto (Seg)".

Comments: According to the original description of *Attus difficilis* (Simon, 1868: p. 590–591), both sexes were described. However, I was only able to re-examine the single male syntype (Figs. 1–3) kept in the MNHN. As Simon (1968, 1937) mentioned at least five different localities for this species, it means several/numerous specimens were available to him, but unfortunately it remains unclear whether all of them were indeed conspecific. Moreover, in his last work of 1937 (p. 1179), Simon stated clearly that the female of *Euophrys difficilis* was unknown ("♀ inconnue"). This provides additional support for the idea that the original series of *Attus difficilis* may not have been conspecific. The only taxonomic