

# Recent Advances and Conflicts in Concepts of Anomuran Phylogeny (Crustacea: Malacostraca)

RAFAEL LEMAITRE<sup>1\*</sup> & PATSY A. McLAUGHLIN<sup>2</sup>

<sup>1</sup> Smithsonian Institution, National Museum of Natural History, Department of Invertebrate Zoology, P.O. Box 37012, Washington, D.C. 20013-7012, U.S.A.  
[lemaitr@si.edu]

<sup>2</sup> Shannon Point Marine Center, Western Washington University, 1900 Shannon Point Road, Anacortes, Washington, 98221-4042, U.S.A.  
[hermit@fidalgo.net]

\* Corresponding author

*Received 26.ii.2009, accepted 22.v.2009.*

*Published online at [www.arthropod-systematics.de](http://www.arthropod-systematics.de) on 25.viii.2009.*

## > Abstract

In the debate over phylogenetic relationships within the Decapoda that has raged for more than a century, the Anomura has been the source of many “conflicts”, including disagreements over which taxa belong in this morphologically diverse infraorder, and even what name is appropriate (Anomura or Anomala). The Anomura currently includes 17 families, 222 genera, and about 2,469 species, although 54% of the genera and 43% of the species are paguroids. A number of studies have summarized the traditional as well as recent concepts of the infraorder that were based on morphology. This review addresses modern studies on systematics of this group over the last two decades that have been based on molecular as well as morphological data, and which have continued to add controversy to concepts of anomuran phylogeny. The landmark study by C.W. Cunningham and co-workers (published in ‘Nature’ in 1992), proclaiming that molecular data confirmed the traditional hypothesis on the evolution of king crabs from hermit crabs, was the catalyst for several studies on anomuran evolution that followed, and is the starting point of this review. Modern studies are divided as follows, and discussed: 1) morphological, larval and molecular phylogenies exclusively of the Paguroidea and/or Anomura; 2) spermatologically derived phylogenies; 3) information from the fossil record; 4) phylogenetic assessments of anomuran taxa included in general decapod analyses; and 5) auxiliary information pertaining to the Paguroidea in general, and Pylochelidae in particular. These studies have made useful contributions to understanding the “big picture” of anomuran relationships but they also have limitations. It is concluded that the Anomura remains today as much a source of discord as it was a century ago, and “conflicts” in analyses will continue to cloud the landscape until more basic, complete information is gathered for all members of this intriguing and varied infraorder.

## > Key words

Anomura, phylogenetic relationships, modern concepts, conflicts, review.

## 1. Introduction

In the debate over phylogenetic relationships within the Decapoda Latreille, 1802 that has continued for more than a century, the Anomura has been the source of many of the “conflicts.” Not only have disagreements flared over which taxa belong in this infraorder, but even what name is appropriate. McLAUGHLIN & HOLTHUIS (1985) reviewed the historical aspects and ultimately concluded that this major taxon should be comprised of the superfamilies Galatheoidea Sa-

moelle, 1819, Hippoidea Latreille, 1825, Lomisoidea Bouvier, 1894 (as Lomoidea) (not 1895 as cited by MARTIN & DAVIS 2001), and Paguroidea Latreille, 1802 and bear the name Anomura MacLeay, 1838 in preference to older, but less frequently used, Anomala Latreille, 1816. Both the name and the hierarchy within the infraorder have yet to gain complete acceptance. And, as TAVARES (2003) pointed out, the lingering uncertainties about the ‘primitive crabs’ remain a per-

manent threat to the higher classification of both the Anomura and Brachyura. We begin this review by initially accepting the Anomura as proposed by MARTIN & DAVIS (2001). Recent advances in several avenues of systematics, however, have resulted in continuing controversies regarding our concepts of anomuran phylogeny. Although our focus is on modern conflicts and concepts, a brief summary of the more prominent classification schemes used in the past to define the Anomura provides an informative prelude to our discussion (see Appendix).

A historical background of the taxa that have been at one time or another included in the Anomura or Anomala was provided by McLAUGHLIN et al. (2007), although they did not mention, for the most part, the various characters used to propose the different classifications. To define their classifications, early carcinologists used characters such as: pleon type, whether it was straight and well developed or folded under the cephalothorax (LATREILLE 1816) or intermediate between straight and folded (H. MILNE EDWARDS 1837), mouthpart morphology (DE HAAN 1841), or degree of cephalization (DANA 1853). Based on mode of life, BOAS (1880) placed the Anomala in his Reptantia or "creepers". BORRADAILE (1906) derived the Anomala from the Thalassinidea based on six characters that in his view separated these two groups from other decapods: reduction of the pleon, free carapace not fused to the epistome, presence of a movable antennal scale, shape of endopod of first maxilliped, presence of 'appendices internae' on pleopods, and third pair of maxillipeds not covering the mouth. BOUVIER (1940) used: separation of epistome from the carapace and lack of its clear fusion to the first pleonal somite; presence of 'linea anomurica'; reduced or non-existent rostrum; narrow endopod of the first maxilliped; epipods reduced or absent on first and third maxillipeds, absent on second maxilliped; reduced fifth pereopod terminating in chela or subchela; and larval characteristics. Larval characters were also used by GURNEY (1942) and MACDONALD et al. (1957). The classifications used by WATERMAN & CHACE (1960) and BOWMAN & ABELE (1982) in two major treatises on crustacean biology were each based on up-to-date advances at the time, whereas DE SAINT LAURENT'S (1979) was based on her phyletic re-evaluation of the Decapoda as a whole, and SCHRAM'S (1986) incorporated fossil evidence.

## 2. Modern concepts

The first challenges to the traditional classification of the Anomura as given by BOWMAN & ABELE (1982) were those of McLAUGHLIN (1983a,b) and MARTIN

& ABELE (1986). McLAUGHLIN (1983a) removed the monotypic Lomisidae Bouvier, 1894 (as Lomidae) from the Paguroidea, elevating it to its own superfamily. McLAUGHLIN (1983b) suppressed the superfamily Coenobitoidea Dana, 1851, uniting the six then recognized hermit crab families, Pylochelidae Bate, 1888, Coenobitidae Dana, 1851, Diogenidae Ortmann, 1892, Paguridae Latreille, 1802, Parapaguridae Smith, 1882 and Lithodidae Samouelle, 1819, under the superfamily Paguroidea. In contrast, MARTIN & ABELE (1986) found the families Lomisidae (as Lomidae) and Lithodidae (Hapalogastrinae and Lithodinae) to be sister group to the remaining Paguroidea. However, it was the startling proclamation "From a hermit to a king" on the cover of the February 6, 1992 issue of the journal 'Nature' that propelled paguroid phylogeny into the arena of major scientific interest. In an article in that issue entitled "Evolution of king crabs from hermit crab ancestors", CUNNINGHAM et al. (1992) alleged that their molecular data proved not only the traditional hypothesis that hermit crabs (Paguridae) gave rise to king crabs (Lithodidae) through carcinization and peramorphosis (ALBERCH et al. 1979), but that the relationship was so close that king crabs were nested in the common hermit crab genus *Pagurus* Fabricius, 1775 (see Fig. 1). CUNNINGHAM et al.'s (1992) data also disassociated the diogenid species *Clibanarius vittatus* (Bosc, 1802) and an unidentified species of the terrestrial coenobitid genus, *Coenobita* Latreille, 1829 from the other paguroids. Interestingly, in a similar molecular study, SPEARS et al. (1993) found the dromiid *Hypoconcha arcuata* Stimpson, 1858 more closely related to *C. vittatus* than to a second dromiid, *Cryptodromiopsis antillensis* (Stimpson, 1858), raising not only the question of the relationship of the primitive crabs to the Anomura, but the accuracy of mitochondrial DNA as an indicator of phylogenetic relationships, at least when too few taxa were utilized in the analyses. CUNNINGHAM et al. (1992) strengthened their molecularly based hypothesis with implications of morphological, larval and fossil support. This landmark study was the catalyst for the numerous analyses of phylogenetic relationships within the Anomura and among reptant decapods that have followed. Although several avenues subsequently have been explored in some detail, the resulting phylogenies rarely have been congruent. We will first review the methods and results of post-CUNNINGHAM et al. (1992) phylogenetic studies that have focused directly on the Anomura in general and the Paguroidea in particular, and then consider the conflicts that have arisen when only few exemplars have been taken as representative of one or more of the anomuran superfamilies during the examination of decapod relationships.

## 2.1. Morphological, larval and molecular phylogenies exclusively of the Paguroidea and/or Anomura

The first was the morphologically based phylogenetic analysis by RICHTER & SCHOLTZ (1994), again with the focal point being the relationship between hermit crabs and lithodids (Fig. 2). Using a Hennigian approach, these authors concluded that while the “symmetrical” hermit crab family Pylochelidae was paraphyletic, the remaining paguroid families constituted a monophyletic taxon of “asymmetrical” hermit crabs. They included taxa from all hermit crab groups and used as outgroup members of Galatheoidea, Hippoidea, Lomoidea and Reptantia. Their study addressed CUNNINGHAM et al.’s (1992) carcinization and peramorphosis only in their conclusion that the lithodid characters they had considered reflected a change toward a free-living habit. RICHTER & SCHOLTZ (1994) emphasized the asymmetrical pleopod loss and pleonal asymmetry, fusion of the last thoracic and first pleonal sternites, division of the second through fifth pleonal tergites, fusion of the basal articles and displaced sensory hairs of the antennular flagellum, and the presence of accessory teeth on the ischium of the third maxilliped as apomorphies uniting the families Paguridae and Lithodidae.

Also using only morphological evidence, McLAUGHLIN & LEMAITRE (1997) addressed the matter of carcinization, asking whether the phenomenon actually occurred as had been hypothesized since its introduction in the late nineteenth century as a means of explaining the transformation of a shell-dwelling hermit crab into a free roaming lithodid. They applied cladistic methods in an unusual way to show evolutionary pathways of a set of adult morphological characters, rather than phylogenetic relationships; however, their results had implications suggestive of relationships (Fig. 3). McLAUGHLIN & LEMAITRE (1997) argued that for any hypothesis to be tenable the assumption had to be made that hermit crabs ancestrally had membranous pleons that were protected by dextral (although they mistakenly stated “sinistral”) gastropod shells. They then asked how, if a shell or some other protective covering for a soft and membranous pleon conferred a survival advantage, could not owning one provide a greater advantage? McLAUGHLIN & LEMAITRE (1997) reasoned that for the traditional hypotheses of carcinization to be correct, either the shell dwelling hermits for some inexplicit reasons chose to forsake safe mobility, or that an unexplainable disappearance of shells compelled some hermit crabs to adapt to adverse conditions by becoming free-living. They suggested that there was no factual evidence that hermit crabs were first and foremost shell-dwelling crustaceans. As we

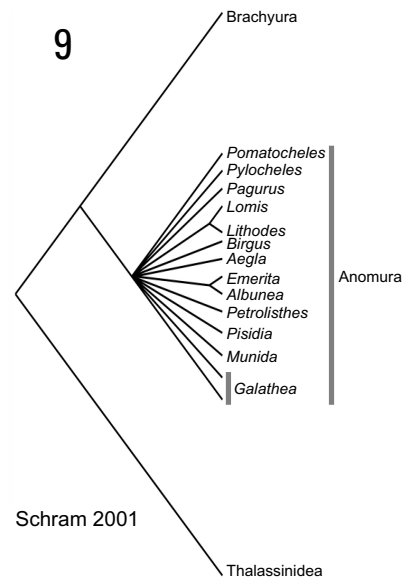
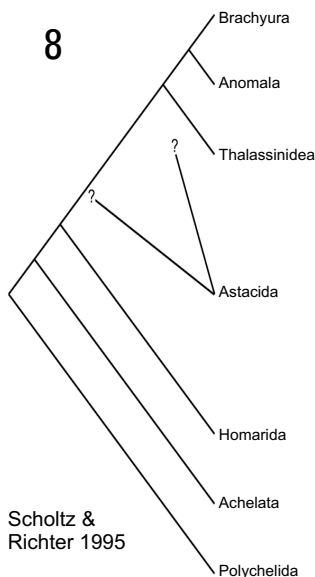
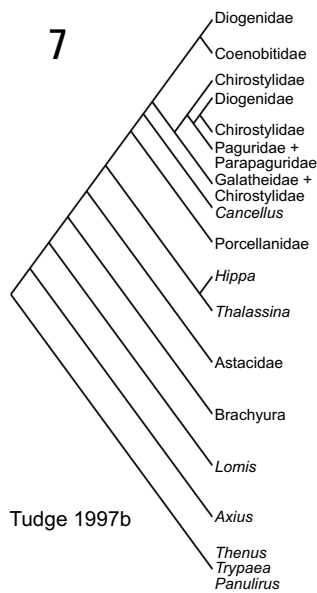
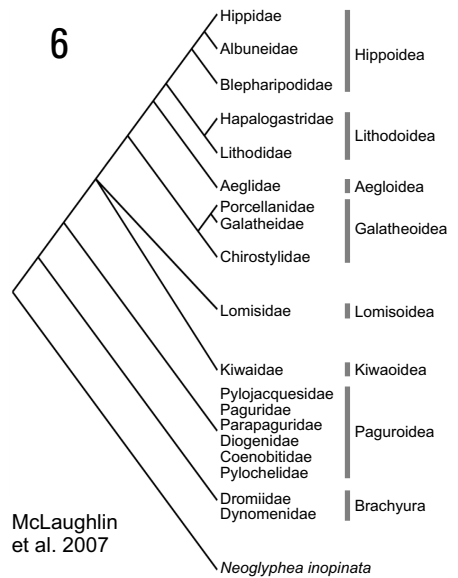
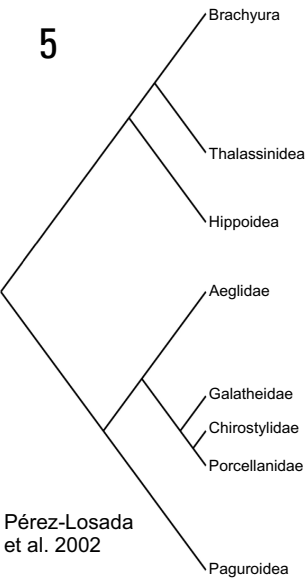
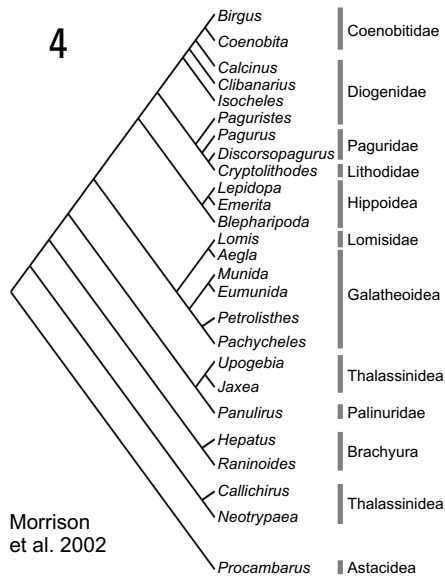
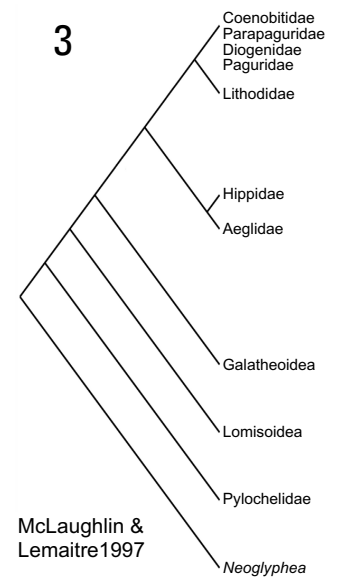
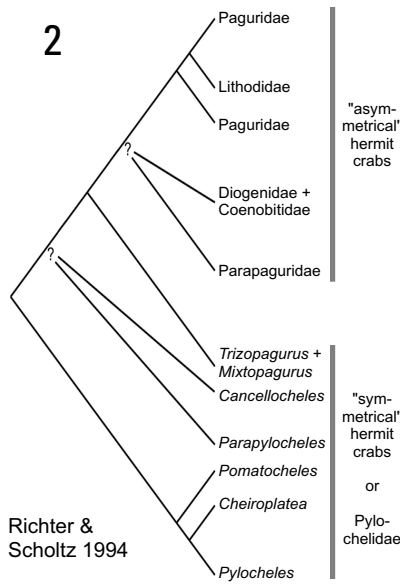
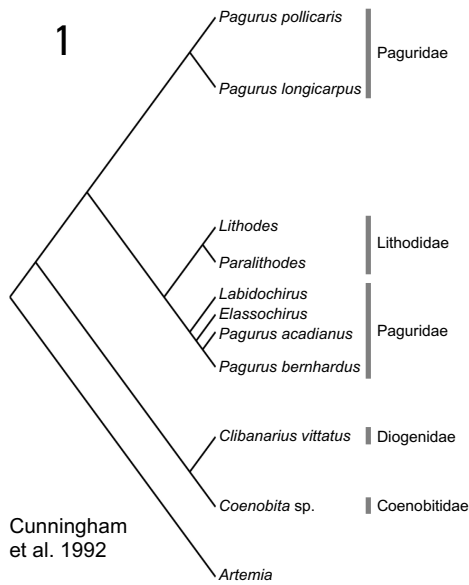
will describe shortly, the fossil record now provides some information that was not available to McLAUGHLIN & LEMAITRE (1997).

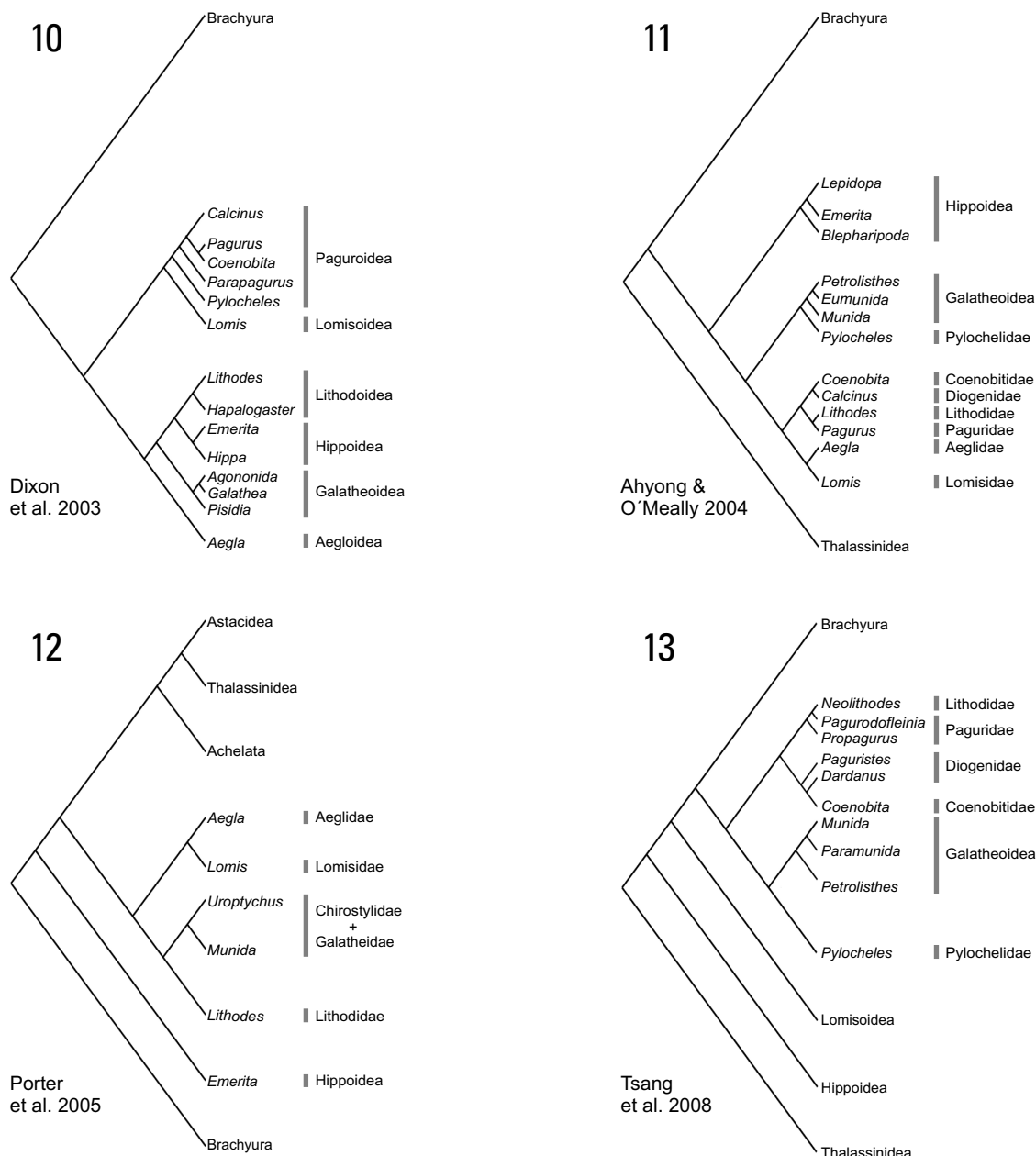
Although their emphasis was on the Paguroidea and the relationship between lithodids and pagurids, McLAUGHLIN & LEMAITRE (1997) also examined the evidence of carcinization in the other major taxa of the Anomura. While disputing the claim of CUNNINGHAM et al. (1992) that hermit crabs gave rise to lithodids through carcinization, they acknowledged that the acquisition of a crablike body form had been achieved independently in several anomuran groups.

Unbeknown to McLAUGHLIN & LEMAITRE (1997) at the time, VON STERNBERG (1996), in a little quoted discourse, similarly had supported the CUNNINGHAM et al. (1992) concept of lithodid evolution from a hermit crab ancestor. Quoting SLUYS (1989), VON STERNBERG (1996) referred to carcinization in the Anomura as representing a ‘rampant’ process of parallelism. Specifically, VON STERNBERG (1996: 154), was of the opinion that “the carcinization events which have occurred in the Anomura thus represent true homoplasies, i.e., parallelisms genetically and ontogenetically uncoupled from each other and with the unique carcinization event characterizing the brachyurans”. In his proposed model of carcinization based on *Hox* gene expression, VON STERNBERG suggested that anomuran carcinization represented complete expression (e.g. lithodids), partial expression (e.g. the parapagurid *Probeebei* Boone, 1926) and repression (e.g. *Pagurus*) of *Hox* and homeotic gene regulatory circuitry. However, he presented no data, and as far as we know, his model has not been tested.

A similar series of parallel pathways for carcinization was provided by the molecular analysis of MORRISON et al. (2002), although their Anomura included the Thalassinidea Latreille, 1831, as well as the superfamilies Galatheoidea, Hippoidea, Paguroidea and Coenobitoidea. In addition to the conclusion that the crab-like body form evolved independently in several anomuran taxa, these authors found molecular support for the monophyly of the Anomura exclusive of the Thalassinidea (Fig. 4). Within the Anomura, the Aeglididae Dana, 1852 grouped with the Lomisidae rather than the other Galatheoidea; the distinctiveness of the Hippoidea was supported, as was the monophyly of “asymmetrical” hermit crabs, including lithodids. However, representatives of “symmetrical” hermit crabs were not included in their study.

MORRISON et al. (2002) were not the only investigators to question the inclusion of the Aeglididae in the Galatheoidea. In a series of molecularly based investigations, PÉREZ-LOSADA et al. (2002a,b, 2004) examined the intra- and interfamilial relationships of the monotypic Aeglididae and other galatheoids (Fig. 5). These authors found strong evidence to sug-





**Figs. 1–13.** Phylogenetic relationships of anomuran groups as proposed or inferred by various recent studies. Presumed basal groups are on lower sides of cladograms.

gest that *Aegla* Leach, 1820 was a polyphyletic genus and that the conflicting results between gene trees and alpha taxonomy might represent unrecognized species. Their results also demonstrated a clear separation of the Aeglidae from other galatheoid families. MACPHERSON et al. (2005) similarly found unquestionable molecular separation of the Aeglidae from the remaining Galatheoidea as well as from their own new family, Kiwaidae Macpherson, Jones & Segonzac, 2005. Nevertheless, none of these authors formally removed the Aeglidae from the Galatheoidea.

Unlike the conflicts seen among analytical results derived from morphological, molecular, larval and

spermatological studies, several molecular studies also have been used successfully to differentiate taxa within the Galatheoidea. For example, MANTELATTO et al. (2006) convincingly demonstrated, through the use of partial fragment analysis of 16S DNA, the genetic distinctiveness of the monotypic paguroid genus *Loxocheloes* Forest, 1964, which had been suggested as possibly being a junior synonym of *Isocheles* Stimpson, 1858 by FOREST & DE SAINT LAURENT (1968) and others. Within the Galatheoidea, MACPHERSON & MACHORDOM (2001) and JONES & MACPHERSON (2007), found from comparisons of morphological characters and molecular sequences, corroboration such that the

sequence divergences confirmed the specific values of certain morphological characters in the genus *Raymunida* Macpherson & Machordom, 2000 and in Eastern Pacific species of *Munidopsis* Whiteaves, 1874. MACPHERSON & MACHORDOM (2004) used a similar combination of methods to detect cryptic speciation in the genus *Munida* Leach, 1820 and CABEZAS et al. (2008) were able to confirm the monophyly of a new genus of galatheids with molecular evidence.

Despite its "longevity", the Hippoidea had received little taxonomic or phylogenetic attention until quite recently. BOYKO & HARVEY (1999) and BOYKO (1999, 2000) published descriptive accounts of regional species from the Indo-West Pacific, Hawaiian and Marquesas Islands. But in a monographic study of the Albuneidae Stimpson, 1858 sensu lato worldwide, BOYKO (2002) provided the morphological information that will allow future phylogenetic studies addressing the relationships among albuneids, between this group and other hippoids, and among other anomurans. However, in one of the few molecular studies of intrageneric relationships in the family Hippidae Latreille, 1825, HAYE et al. (2002) found conflicts between the genetic and morphological concepts of the family, once again demonstrating that anomuran relationships often are not easily evaluated.

At the time that molecular and morphological evidence appeared to be providing momentum for the "hermit to king" hypothesis, the morphological arguments of McLAUGHLIN & LEMAITRE (1997) against this evolutionary scenario received some much needed support from the larval sector. Three studies on the megalopal and very early juvenile development of five species of lithodids (CRAIN & McLAUGHLIN 2000a,b; McLAUGHLIN & LEMAITRE 2001a) provided the first evidence that the long standing proposed evolution of the pleonal tergites of king crabs was not as it had been hypothesized. Specifically, as previously noted, RICHTER & SCHOLTZ (1994) were of the opinion that the Lithodidae retained divided pleonal tergites from their hermit-crab-like ancestors and in members of one subfamily, the intervening gaps were filled by secondary calcification, either as nodules as in *Lithodes maja* (Linnaeus, 1758), or segmental plates as in *Paralomis granulosa* (Jacquinot, in Hombron & Jacquinot, 1846). Even with the limited data available, McLAUGHLIN & LEMAITRE (2001a) were able to demonstrate that lithodid pleonal tergite structure was the result of decalcification and sundering, not secondary calcification and fusion. But only when the tergal changes occurring through the first six or more lithodid juvenile stages had been documented (McLAUGHLIN et al. 2001; McLAUGHLIN & PAUL 2002; McLAUGHLIN et al. 2003) could McLAUGHLIN et al. (2004) confidently reject the traditional hypotheses regarding pleonal tergite transformations. Similarly, carcinization and

peramorphosis, as the causal factor in the evolution from "hermit to king" (CUNNINGHAM et al. 1992) had been shown to be a convergent phenomenon throughout the Anomura (McLAUGHLIN & LEMAITRE 1997; MORRISON et al. 2002). However, several of RICHTER & SCHOLTZ's (1994) apomorphies presumably uniting pagurids and lithodids remained unchallenged.

In a reappraisal of hermit crab phylogeny, McLAUGHLIN et al. (2007) specifically addressed the long standing assumption that asymmetry was an apomorphy uniting lithodids with paguroids (Fig. 6). These authors presented evidence strongly supporting their hypothesis that pleonal asymmetry in the two taxa was not homologous. Additionally, they pointed out, as PALMER (2004) had, that cheliped asymmetry could not be considered a strong synapomorphy of lithodids and paguroids because it was common to many decapods. Similarly, McLAUGHLIN et al. (2007) demonstrated that the partial pleopod loss seen in paguroids was not homologous with the total male and partial female pleopod loss of lithodids.

McLAUGHLIN & LEMAITRE's (1997) analysis was not limited to the Paguroidea. They also evaluated all of the anomuran superfamilies using families as terminal taxa. Their analysis, consisting of 79 characters for all 17 known anomuran families, and/or subfamilies, and three outgroup species resulted in a proposed new classification. Polyphyly of the Paguroidea resulted in the removal of the Lithodidae and subsequent elevation of that taxon to superfamily rank of Lithodoidea, with families Lithodidae and Hapalogastriidae Brandt, 1850. Polyphyly of the Galattheoidea similarly resulted in the removal of the Aeglididae and Kiwaididae and their elevation to superfamily ranks, the Aegloidea and Kiwaoidea respectively.

## 2.2. Spermatologically derived phylogenies of the Paguroidea and/or Anomura

In a relatively early study of spermatozoa ultrastructure as a tool of phylogenetic assessment in the Anomura, TUDGE (1992) presented a "branching tree" of hermit crab sperm types, based on data drawn from TUDGE & JAMIESON (1991) and HINSCH (1980). The two genera of the Coenobitidae were closely linked and showed similarities with the diogenid genera *Dardanus* Paul'son, 1875 and *Diogenes* Dana, 1851; that clade was the sister group to the three species of *Clibanarius* Dana, 1852 included in the study. All were distantly remote from the only pagurid representative, *Pagurus bernhardus* (Linnaeus, 1758).

In a greatly expanded database of 42 anomuran and 9 non-anomuran taxa and 32 spermatozoal and spermatophore characters, TUDGE (1997b) produced an

interesting, albeit somewhat astonishing, cladogram of a 50% majority consensus tree (Fig. 7). In a previous study, TUDGE (1997a) had already concluded that on the basis of spermatological evidence there was no close relationship between the Lomisidae and the Lithodidae represented by *Lithodes maja* as described from light microscope drawings by RETZIUS (1909), but it was surprising to see *Lomis hirta* (Lamarck, 1818) in an unresolved relation with two brachyuran species. *Lithodes maja* was not included in TUDGE's (1997b) phylogenetic assessment, but its spermatozoal morphology subsequently was described in detail by TUDGE et al. (1998). Other surprising relationships in TUDGE's (1997b) analysis included *Hippa pacifica* (Dana, 1852) grouped with a thalassinid; a clade including species of Coenobitidae (*Diogenes*, *Dardanus*, *Calcinus* Dana, 1851 and *Strigopagurus* Forest, 1995), was distinctly separated from a second clade that included species of Diogenidae (*Clibanarius*), Paguridae (*Pagurus*, *Xylopagurus* A. Milne-Edwards, 1880, *Porcellanopagurus* Filhol, 1885), Parapaguridae (*Sympagurus* Smith, 1883), Chirostylidae Ortmann, 1892 (*Uroptychus* Henderson, 1888, *Eumunida* Smith, 1883), and species of Galatheidae (*Allogalatea* Baba, 1969, *Munida* Leach, 1820, *Munidopsis* Whiteaves, 1874). The diogenid genus *Cancellus* H. Milne Edwards, 1836 was distantly removed, as were species of the Porcellanidae Hayworth, 1825. In a more recent study, TUDGE et al. (2001) found the spermatozoal morphology of an unidentified species of the pylochelid subgenus *Pylocheles* (*Bathycheles*) Forest, 1987 like no other anomuran spermatozoa studied to date. The specimens of this "unidentified species" have recently been shown to represent a new species, *Bathycheles phenax* McLaughlin & Lemaitre (2009). TUDGE et al. (2001) were of the opinion that the differences exhibited by this species when compared to other anomurans were as great as the differences observed between the spermatozoa of primitive brachyuran crabs and those of the more advanced families. Although phylogenetic relationships determined by spermatozoal evidence seem, at least in part, as contentious as those obtained by morphological and molecular methods, the recent study by TIRELLI et al. (2008) indicated spermatological monophyly in at least the diogenid genera *Calcinus* and *Clibanarius*. The spermatozoal morphology of three examined species of hippoids also provides additional evidence of monophyly of the Hippoidea (TUDGE et al. 1999). Similarly, spermatozoal evidence from the aeglid *Aegla longirostris* Bond-Buckup & Buckup, 1994 confirmed the distinctness of the family Aeglididae and supported its separation from the Galattheoidea (TUDGE & SCHELTINGA 2002). Additionally, spermatozoal evidence (TUDGE & JAMIESON 1996a,b) also supports the dichotomy in the Porcellanidae suggested by LEBOUR

(1943), GORE (1971), and others based on larval differences.

### 2.3. Information from the fossil record

Using temporal scaling, CUNNINGHAM et al. (1992) estimated that king crabs diverged from their pagurid ancestors in the lower Miocene, and ZAKLAN (2002) suggested such divergence may have been enhanced through protection provided by recently evolved canopy-producing kelp. Although CUNNINGHAM et al.'s (1992) molecular clock methodology has been criticized (SHAUL & GRAUR 2002; GRAUR & MARTIN 2004; HEADS 2005), the discovery by FELDMANN (1998) of a fossil species of *Paralomis* White, 1856 from the Miocene of New Zealand might support their proposition, although Feldmann expressed the belief that the lithodid fossil record extended well beyond the Miocene; those fossils simply had not been found yet.

In contrast to the Brachyura Latreille, 1802, which has a substantial fossil record, relatively few anomuran fossils are known. Four genera in each of the superfamilies Galattheoidea and Paguroidea were cited by GLAESSNER (1969) as occurring as early as the Jurassic, with the Lomisoidea and Hippoidea reported Recent taxa. As may be seen by the review of SCHWEITZER & FELDMANN (2000) eight galatheid genera currently have fossil records dating back to the Middle or Upper Jurassic. The freshwater Aeglididae, until recently also included in the Galattheoidea, similarly was considered of fairly recent origin. However, FELDMANN (1984) described the first fossil aeglid from Late Cretaceous marine rocks in New Zealand, suggesting that its freshwater endemicity might be recently evolved. The geologic occurrence of the Aegloidea was moved even earlier, to the Early Cretaceous, and its range extended to the northern hemisphere by the discovery of a second fossil genus in the Tlayúa formation in Mexico (FELDMANN et al. 1998). Four confirmed fossil hippoids were reported by BOYKO (2002) dating back to the Middle and Late Eocene. AMATI et al. (2004) evaluated the phylogenetic relationships among decapod taxa using fossil and extant taxa, and although their focus was on astacid lobsters, their cladistic analysis showed the Paguridae (*Pagurus*) to be sister group to the Galatheidae (*Galathea*). These recent studies and discoveries might make it tempting to suggest that the ancestral anomuran was a galatheid-like decapod, however, anomuran fossil history is just beginning to unfold.

Unfortunately, the paguroids in the fossil record have been known primarily from isolated chelipeds (SCHWEITZER & FELDMANN 2001), making even generic placement uncertain at best, as discussed in detail by SCHWEITZER et al. (2005). Because of this difficulty,

the prior Jurassic occurrences of paguroids continue to be suspect. A few descriptions of in situ gastropod shell-inhabiting hermit crabs have placed paguroids in the Upper Cretaceous (MERTIN 1941; JAGT et al. 2000, 2006), Miocene (HYDEN & FOREST 1980; FELDMANN & KEYES 1992), and Oligocene (KARASAWA 2002), but only the specimen reported by HYDEN & FOREST (1980) was in sufficiently good condition to permit identification. It was described as *Pagurus clifdenensis* Hyden & Forest, 1980 and subsequently transferred to the genus *Diacanthurus* McLaughlin & Forest, 1997, by the latter authors. But the most interesting report of a paguroid fossil is that of FRAAIJE (2003) who described a perfectly preserved Early Cretaceous hermit crab found occupying the shell of an ammonite cephalopod. FRAAIJE (2003) suggested that the discovery of this hermit crab, apparently a diogenid judging from the description of the larger left cheliped, might explain the absence of hermit crabs in gastropod shells of Jurassic and Early Cretaceous ages. He noted that paleontologists may have focused their attentions on the wrong class of mollusks in their attempts to analyze the evolution of hermit crabs. However, VAN BAKEL et al. (2008) have just provided us with even more tantalizing data. These paleontologists report on the discovery of a series of Jurassic age carapaces that most convincingly belong to paguroids, including two that appear assignable to families of the Pylochelidae. These are the first examples of fossilized paguroid carapaces and the first positive confirmations of paguroid occurrence in the Jurassic period. More importantly, these first fossil records of pylochelids add a new dimension to the puzzle of “who begat whom.”

#### 2.4. Phylogenetic assessments of anomuran taxa included in general decapod analyses

Having already reviewed relationships within the Anomura (RICHTER & SCHOLTZ 1994), SCHOLTZ & RICHTER (1995) then undertook an assessment of phylogenetic relations within the Decapoda Reptantia (Fig. 8). For the Anomura (as Anomala), these authors cited several apomorphies they believed demonstrated the monophyly of the infraorder. In addition, they discerned two higher monophyletic taxa within the anomuran infraorder, one comprised of the Galatheaidea and Hippoidea and the second represented by *Lomis* and the hermit crabs, including coenobitids and lithodids. However, when anomuran taxa are included in broader phylogenetic analyses, often quite unexpected relationships appear. For example, SCHRAM (2001) re-examined the reptant decapod character set of SCHOLTZ & RICHTER (1995). After converting their

raw data to a numerical matrix suitable for parsimony analysis, SCHRAM (2001) found only a few exceptions to the initial results of SCHOLTZ & RICHTER (1995), but a strict consensus of 32,700 trees resulted in a multitude of polychotomies (Fig. 9). Nevertheless, the Anomura again was found to be monophyletic, with *Lomis hirta* and *Lithodes maja* resolved as sister taxa. SCHRAM's (2001) matrix was then reconfigured with additional characters from BURKENROAD (1981), and while resolution by 50% majority rule was better for the overall relationships among reptants, *L. maja* was still distinctly separated from *Pagurus bernhardus*. Further data manipulations by SCHRAM (2001) produced other 50% consensus trees, all of which allied *L. maja* to the Galatheaidea and Aegliidae.

DIXON et al. (2003) also attempted to resolve the ongoing debate over relationships within the Decapoda (Fig. 10) using a suite of morphological characters. Their analysis was based on 70 characters for 60 taxa, which they treated as both unordered and ordered in generating majority rule consensus trees. In their unordered tree, the Galatheaidea, exclusive of the Aegliidae, was sister group to the Hippoidea; the Lomisoidea was sister group to the Paguroidea and the two representatives of the subfamilies of the Lithodidae were unresolved. When the analysis was ordered, a similar majority consensus again produced a tree in which the two families of Lithodidae were together sister group to the Hippoidea and that clade in turn was sister group to the Galatheaidea, exclusive of the Aegliidae; the relationships of the Lomisoidea and families of the Paguroidea remained unchanged. Given what they considered the convincing evidence presented by CUNNINGHAM et al. (1992), RICHTER & SCHOLTZ (1994) and MORRISON et al. (2002), DIXON et al. (2003) suggested that the separation of the Lithodidae from the remainder of the Paguroidea might have been caused by the remarkably derived form of the lithodids. However, as in those previous studies, sample sizes were small. In the DIXON et al. (2003) analysis, paguroids (including lithodids) accounted for only seven of the 60 taxa examined, while the entire anomuran representation was only 14 taxa.

An apparent conflict between molecular and morphological data emerged in the recent investigation by AHYONG & O'MEALLY (2004) (Fig. 11). Although their scope again was a phylogeny of reptant decapods in general, data from their three molecular loci placed the Hippoidea as sister group to a weakly supported clade of *Lomis*, *Aegla*, *Lithodes* and *Pagurus*, whereas *Coenobita* and *Calcinus* were sister group to *Pylocheles* A. Milne-Edwards, 1880, and the Galatheaidea, exclusive of *Aegla*. In contrast, their morphological data produced a quite different strict consensus tree. With weak support for the positions of *Lomis* and *Lithodes*, the Anomura were displayed as three clades, the first



consisting of *Lomis*, *Lithodes*, *Pylocheles*, *Coenobita*, *Calcinus* and *Pagurus*, the second with the genus pair *Eumunida* and *Munida*, and the third with the genus pair *Aegla* and *Petrolisthes* Miers, 1876 sister group to the Hippoidea. However, when the data were combined and weighted for minimized incongruences, *Lomis* was paired with *Aegla*, the genus pair *Pagurus* and *Lithodes* was sister group to the genus pair *Calcinus* and *Coenobita*. *Pylocheles* and *Munida* were sister group to the genus pair *Eumunida* and *Petrolisthes*, and the Hippoidea formed a separate clade. Although AHYONG & O'MEALLY (2004) found strong support for the monophyly of the Anomura, they noted, correctly, that internal relationships were less stable and support for indicated patterns was weak. Particularly unexpected was the grouping of the Pylochelidae with the Galattheoidea, exclusive of the Aeglidae, rather than the Paguroidea. Nevertheless, their results, like those of previous studies, supported the separation of the Aeglidae from the Galattheoidea. Of the 44 taxa of the ingroup, 13 were anomurans, each representing one family.

Two molecularly based studies of decapod phylogeny have been published more recently and with even more diametrically opposed conclusions. The study by PORTER et al. (2005), while not including the Paguroidea in their sample of anomurans (as Anomala), placed the Brachyura and Anomura as basal reptant lineages, a position contradictory to all previous analyses (Fig. 12). These authors concluded that their hypothesis of reptant relationships would force re-interpretation of many of the morphological characters currently used to define decapod lineages. Additionally, they pointed out that their basal positions of the Brachyura and Anomura were supported by the current understanding of the fossil record, which well might be true, given the most recent additions to galatheid and paguroid fossils.

The latest published phylogeny of the Decapoda by TSANG et al. (2008) adds another dimension to the molecular playing field (Fig. 13). These authors called attention to the short comings of mitochondrial and nuclear ribosomal DNA markers, and suggested that the use of nuclear protein genes would provide a more reliable reconstruction of the phylogeny of the infraorders of the Decapoda. TSANG et al.'s (2008) results did not provide a robust phylogeny of the Anomura. Like the molecular results of AHYONG & O'MEALLY (2004) they found the Pylochelidae aligned with the Galattheoidea, which is not surprising since the same species, *Pylocheles* (*Xylocheles*) *macrops* Forest, 1987 was the molecular source for both studies. As additional support for this alignment, the authors of both papers cited TUDGE et al.'s (2001) report that sperm morphology of *Pylocheles* (*Bathycheles*) sp. differed from all other hermit crabs. What AHYONG & O'MEALLY (2004)

and TSANG et al. (2008) omitted from TUDGE et al.'s evaluation was the latter's observation, as previously noted, that the sperm of pylochelids, as represented by that one species, was not only different from all other hermit crabs but from all other studied anomurans and that difference was as great as the difference seen between primitive crabs and more advanced brachyurans. That a single species of *Pylocheles* can not accurately reflect the spermatological structure, molecular make up, or morphology of the family is discussed in the following section. In addition to the non-paguroid placement of the Pylochelidae, TSANG et al. (2008) found the Lithodidae nested within the Paguridae, and the Coenobitidae nested within the Diogenidae. These authors found that while their results supported the conclusions reached in earlier studies of the relationship between pagurids and lithodids, effectively challenging the superfamily rank proposed by McLAUGHLIN et al. (2007), they were unable to robustly resolve the positions of several major clades within the Anomura. The fact that TSANG et al.'s (2008) analysis was based on only 13 anomuran species might be a contributing factor to weakness of their results.

## 2.5. Auxiliary information pertaining to Paguroidea in general and Pylochelidae in particular

In a series of studies just completed, the phylogeny of the Pylochelidae has been investigated on morphological and to a lesser extent on developmental levels. A cladistic analysis of the family, with species or subspecies as terminal taxa, utilized 79 morphological characters for 42 of the 46 assigned taxa in the six subfamilies and confirmed the accurate assignment of the Pylochelidae to the Paguroidea (LEMAITRE et al. 2009; McLAUGHLIN & LEMAITRE 2009). However, of the six subfamilies proposed by FOREST (1987) only three were supported: Pylochelinae Bate, 1888, Pomatochelinae Stebbing, 1914 and Trizochelinae Forest, 1987. Clear distinctions separate these three subfamilies, both morphologically (McLAUGHLIN & LEMAITRE 2009) and developmentally (McLAUGHLIN & LEMAITRE 2008). Only minuscule larval, molecular and spermatological data currently are available. However, we have accumulated sufficient morphological data to recognize that differences among the three subfamilies, and among the tribes of the Trizochelinae, are of such magnitude that it is questionable that even a single exemplar of each subfamily will sufficiently represent its major taxon. For these reasons, a single species representing the entire Pylochelidae cannot give accurate input to any phylogenetic appraisal, be it morphological or molecular.

TSANG et al. (2008) also questioned the monophyly of the Diogenidae, and probably with merit. Although monophyly of the Paguroidea is hard to disavow when its numerous unique apomorphies are considered, it is highly probable that with further in-depth study of the other paguroid families, none, except perhaps the Coenobitidae and Pylojacquesidae McLaughlin & Lemaître, 2001b, will be found to be monophyletic. While it is always tempting to strive to solve the “big picture”, the Anomura remains today as much a source of discord as it was a century ago. Conflicts in analyses will continue to cloud the landscape until more basic information is gathered for all members of this infraorder.

### 3. Conclusions

In his progress review of the phylogeny of decapods SCHRAM (2001) stated that there is general agreement that the Decapoda is monophyletic. He also lamented, however, the lack of clarity in regard to which groups within the Decapoda were monophyletic. Indeed our review of recent concepts has shown that while some advancements have been made on deciphering the composition and relationships within the Anomura, there is still considerable controversy. The conclusions of several phylogenetic studies based on molecular data, in particular, are contradictory. That conflicts exist in modern studies is not surprising, given that not all have included all anomuran groups in their analyses, or have in some cases used taxa that can not accurately represent large or phylogenetically poorly known anomuran families. Furthermore, most studies have not focused exclusively on ascertaining the phylogenetic relationships of the Anomura, but instead have concentrated on larger groups within the decapods or the entire Decapoda. Thus, only a few conclusive statements can be made about the phylogenetic knowledge of anomurans specifically, and these can be summarized as follows:

- (1) Despite numerous studies, there is still conflicting evidence on the relationships between the Anomura and the “primitive crabs” or Podotremata (TAVARES 2003; AHYONG et al. 2007).
- (2) Most recent studies based on morphology and molecules conclude that the Anomura and Brachyura are monophyletic sister clades, the two forming the Meiura (SCHOLTZ & RICHTER 1995; SCHRAM 2001; DIXON et al. 2003; AHYONG & O’MEALLY 2004).
- (3) Several studies have consistently placed the Thalassinoidea outside of the Anomura, although there is still debate over whether the former are monophyletic or not (e.g., AHYONG & O’MEALLY 2004).
- (4) The Lomisoidea is monophyletic, although there is uncertainty as to which is its sister group (e.g., McLAUGHLIN et al. 2007).
- (5) The Hippoidea appear to be monophyletic but this needs rigorous phylogenetic testing.
- (6) There is solid evidence that the Aeglidae is outside the Galatheoidea, although it is unclear which is the sister group (e.g., MORRISON et al. 2002; PORTER et al. 2005; McLAUGHLIN et al. 2007).
- (7) The families Galatheidae, Chirostylidae, Porcellanidae of the Galatheoidea still need rigorous phylogenetic testing, as does the Kiwaidae, a taxon originally placed in the Galatheoidea and then elevated to superfamily rank by McLAUGHLIN et al. (2007), not an elevation accepted by BABA et al. (2008).
- (8) The composition of the Paguroidea *sensu lato* has been revised recently based on morphological and developmental evidence, and the family Lithodidae removed to its own superfamily (McLAUGHLIN et al. 2007).
- (9) Within the Paguroidea, LEMAITRE et al. (2009) confirmed the parapyly of the Pylochelidae originally proposed by RICHTER & SCHOLTZ (1994), although molecular studies are needed to explore the possible polyphyly of this family suggested by larval data, and other families still need to be fully analyzed.

### 4. Acknowledgements

We thank the organizers of the International Symposium “Advances in Crustacean Phylogenetics” held in Rostock, Germany, October 7–11, 2008, for inviting the authors to present this review as a plenary talk. Rose Gullege assisted with the preparation of the figures.

### 5. References

- AHYONG, S.T. & D. O’MEALLY 2004. Phylogeny of the Decapoda Reptantia: Resolution using three molecular loci and morphology. – *The Raffles Bulletin of Zoology* **52**: 673–693.
- AHYONG, S.T., J.C.Y. LAI, D. SHARKEY, D.J. COLGAN & P.K.L. NG 2007. Phylogenetics of the brachyuran crabs (Crustacea: Decapoda): The status of Podotremata based on small subunit nuclear ribosomal RNA. – *Molecular Phylogenetics and Evolution* **45**: 576–586.
- ALBERCH, P., S.J. GOULD, G.F. OSTER & D.B. WAKE 1979. Size and shape in ontogeny and phylogeny. – *Paleobiology* **5**: 296–317.
- AMATI, L., R.M. FELDMANN & J.-P. ZONNEVELD 2004. A new family of Triassic lobsters (Decapoda: Astacidea) from British Columbia and its phylogenetic context. – *Journal of Paleontology* **78**(1): 150–168.

- BABA, K. 1969. Four new genera with their representatives and six new species of the Galatheidae in the collections of the Zoological Laboratory, Kyushu University, with redefinition of the genus *Galathea*. – *Ohmu* **2**: 33–40.
- BABA, K., E. MACPHERSON, G.C.B. POORE, S.T. AHYONG, A. BERMÚDEZ, P. CABEZA, C.-W. LIN, M. NIZINSKI, C. RODRIGUES & K.E. SCHNABEL 2008. Catalog of squat lobsters of the world (Crustacea: Decapoda: Anomura – families Chirostylidae, Galatheidae and Kiwaidae). – *Zootaxa* **1905**: 1–220.
- BAKEL, B.W.M. VAN, R.H.B. FRAAIJE, J.W.M. JAGT & P. ARTAL 2008. An unexpected diversity in Late Jurassic hermit crabs (Crustacea, Decapoda, Anomura) in Central Europe. – *Neues Jahrbuch für Geologie und Paläontologie, Abhandlungen* **250**(2): 137–156.
- BATE, C.S. 1888. Report on the Crustacea *Macrura* dredged by H.M.S. Challenger during the years 1872–76. *In*: Report on the scientific results of the voyage of H.M.S. Challenger during the years 1873–76. – *Zoology* **24**(52): i–xc, 1–942.
- BOAS, J.E.V. 1880. Studier over decapodernes slaegtskabsforhold. – *Kongelige Danske Videnskabernes Selskabs Skrifter, Naturvidenskabelig og Mathematisk Afdeling* (5) **6**: 25–210.
- BOND-BUCKUP, G. & L. BUCKUP 1994. A familia Aeglididae (Crustacea, Decapoda, Anomura). – *Arquivos de Zoologia, São Paulo* **32**: 159–346.
- BOONE, L. 1926. A new family of Crustacea. Preliminary technical description. – *New York Zoological Society Bulletin* **29**: 73.
- BORRADAILE, L.A. 1906. On the classification and genealogy of the reptant decapods. *In*: J.S. GARDINER (ed.), *The Fauna and Geography of the Maldive and Laccadive Archipelagoes*, being an account of the work carried on and of the collections made by an expedition during the years 1899 and 1900, **2**: 690–699. – University Press, Cambridge.
- BOSC, L.A.G. 1802. Histoire naturelle des Crustacés, contenant leur description et leurs meours; avec figures dessinés d'après nature, **2**: 1–296. – De Guilleminet, Paris.
- BOUVIER, E.-L. 1894. Sur les caractères et l'évolution des Lomisinés, nouveau groupe de crustacés anomures. – *Comptes Rendus des Séances de l'Académie des Sciences* **118**: 1353–1355.
- BOUVIER, E.-L. 1895. Recherches sur les affinités des *Lithodes* & des *Lomis* avec les Pagurides. – *Annales des Sciences Naturelles, Zoologie et Paléontologie* (7) **18**: 157–213.
- BOUVIER, E.-L. 1940. Décapodes marcheurs. Faune de France **37**. – Paul Lechevalier, Paris, 404 pp.
- BOWMAN, T.E. & L.G. ABELE 1982. Classification of the Recent Crustacea. Pp. 1–27 *in*: L.G. ABELE (ed.), *The Biology of Crustacea, Vol.1. Systematics, the fossil record and biogeography*. – Academic Press, New York.
- BOYKO, C.B. 1999. The Albuneidae (Decapoda: Anomura: Hippoidea) of the Hawaiian Islands, with description of a new species. – *Proceedings of the Biological Society of Washington* **112**(1): 145–163.
- BOYKO, C.B. 2000. The Hippoidea (Decapoda, Anomura) of the Marques Islands, with description of a new species of Albunea. – *Zoosystema* **22**(1): 107–116.
- BOYKO, C.B. 2002. A worldwide revision of the Recent and fossil sand crabs of the Albuneidae Stimpson and Blepharipodidae, new family (Crustacea: Decapoda: Anomura: Hippoidea). – *Bulletin of the American Museum of Natural History* **272**: 1–396.
- BOYKO, C.B. & A.W. HARVEY 1999. Crustacea Decapoda: Albuneidae and Hippidae of the tropical Indo-West Pacific region. *In*: A. CROSNIER (ed.), *Résultats des Campagnes MUSORSTOM*, **20**. – *Mémoires du Muséum National d'Histoire Naturelle* **180**: 379–460.
- BRANDT, J.F. 1850. Bericht über die für die Reisebeschreibung des Herrn von Middendorf von J.F. Brandt bearbeiteten Krebsstiere aus den Abtheilungen der Brachyuren (Krabben), Anomuren und Makrouren (Krebse). – *Bulletin de la Classe physico-mathématique de l'Académie Impériale des Sciences de Saint Pétersbourg* **8**: 234–238.
- BURKENROAD, M.D. 1981. The higher taxonomy and evolution of Decapoda (Crustacea). – *Transactions of the San Diego Society of Natural History* **19**: 251–268.
- CABEZAS, P., E. MACPHERSON & A. MACHORDOM 2008. A new genus of squat lobster (Decapoda: Anomura: Galatheidae) from the South West Pacific and Indian Ocean inferred from morphological and molecular evidence. – *Journal of Crustacean Biology* **28**: 68–75.
- CRAIN, J.A. & P.A. McLAUGHLIN 2000a. Larval and early juvenile development in the Lithodidae (Decapoda: Anomura: Paguroidea) reared under laboratory conditions. 1. Subfamily Lithodinae: *Lopholithodes mandtii* Brandt, 1848. – *Invertebrate Reproduction and Development* **37**: 43–59.
- CRAIN, J.A. & P.A. McLAUGHLIN 2000b. Larval and early juvenile development in the Lithodidae (Decapoda: Anomura: Paguroidea) reared under laboratory conditions. 2. Hapalogastrinae: *Placetron wosnessenskii* Schalfew, 1892, with notes on comparative development within the subfamilies of the Lithodidae. – *Invertebrate Reproduction and Development* **37**: 113–127.
- CUNNINGHAM, C.W., N.W. BLACKSTONE & L.W. BUSS 1992. Evolution of king crabs from hermit crab ancestors. – *Nature* **355**: 539–542.
- DANA, J.D. 1851. *Conspectus crustaceorum quae in orbis terrarum circumnavigatione, Carolo Wilkes e classe reipublicae foederatae duce, lexit et descripsit*. – (Preprint from) *Proceedings of the Academy of Natural Sciences, Philadelphia* **5**: 267–272.
- DANA, J.D. 1852. Crustacea, part I. United States Exploring Expedition, during the years 1838, 1839, 1840, 1841, 1842, under the command of Charles Wilkes, U.S.N., 13: i–viii, 1–685. – C. Sherman, Philadelphia; Reprinted: Antiquariaat Junk, Lochem, Netherlands, 1972.
- DANA, J.D. 1853. On the classification and geographical distribution of Crustacea. Pp. 1395–1592 *in*: *The Report on Crustacea of the United States Exploring Expedition, under Captain Charles Wilkes, U.S.N., during the years 1838–1842*. – Printed by C. Sherman, Philadelphia.
- DIXON, C.J., S.T. AHYONG & F.R. SCHRAM 2003. A new hypothesis of decapod phylogeny. – *Crustaceana* **76**: 935–975.
- FABRICIUS, J.C. 1775. *Systema entomologiae, sistens, insectorum classes, ordines, genera, species, adiectis synonymis, locis, descriptionibus, observationibus*. – *Officina Libraria Kortii, Flensburgi & Lipsiae*, xxxii + 832 pp.

- FELDMANN, R.M. 1984. *Haumuriaegla glaessneri* n. gen. and sp. (Decapoda; Anomura; Aeglididae) from Haumurian (Late Cretaceous) rocks near Cheviot, New Zealand. – *New Zealand Journal of Geology and Geophysics* **27**: 379–385.
- FELDMANN, R.M. 1998. *Paralomis debodeorum*, a new species of decapod crustacean from the Miocene of New Zealand: first notice of the Lithodidae in the fossil record. – *New Zealand Journal of Geology and Geophysics* **41**: 35–38.
- FELDMANN, R.M. & I.W. KEYES 1992. Systematic and stratigraphic review with catalogue and locality index of the Mesozoic and Cenozoic decapod Crustacea of New Zealand. – *New Zealand Geological Survey Record* **45**: 1–73.
- FELDMANN, R.M., F.J. VEGA, S.P. APPLGATE & G.A. BISHOP 1998. Early Cretaceous arthropods from the Tlayúa Formation at Tepexi de Rodríguez, Puebla, México. – *Journal of Paleontology* **72**: 79–90.
- FILHOL, H. 1885. Description d'un nouveau genre de Crustacés provenant de la Nouvelle-Zélande. – *Bulletin de la Société Philomatique de Paris* (7) **9**: 47–48.
- FOREST, J. 1964. Sur un nouveau genre de Diogenidae (Crustacea Paguridea) de l'Atlantique Sud-Américain, *Loxopagurus* gen. nov., établi pour *Pagurus loxochelis* Moreira. – *Zoologische Mededelingen* **39**: 279–296.
- FOREST, J. 1987. Les Pylochelidae ou "Pagures symétriques" (Crustacea Coenobitoidea). In: Résultats des campagnes MUSORSTOM, **3**. – Mémoires du Muséum National d'Histoire Naturelle, Série A, Zoologie, **137**: 1–254.
- FOREST, J. 1995. Crustacea Decapoda Anomura: Révision du genre *Trizopagurus* Forest, 1952 (Diogenidae), avec l'établissement de deux genres nouveaux. In: A. CROSNIER (ed.), Résultats des Campagnes MUSORSTOM, **13**. – Mémoires du Muséum National d'Histoire Naturelle **163**: 9–149.
- FOREST, J. & M. DE SAINT LAURENT 1968. Résultats scientifiques des campagnes de la "Calypso", Part VII. Campagne de la Calypso au large des côtes Atlantiques de l'Amérique du Sud (1961–1962). 6. Crustacés Décapodes: Pagurides. – *Annales de l'Institut Océanographique de Monaco*, n.s. **45**: 45–172.
- FRAAIJE, R. 2003. The oldest *in situ* hermit crab from the Lower Cretaceous of Speeton, UK. – *Paleontology* **46**(1): 53–57.
- GLAESSNER, M.F. 1969. Decapoda. In: R.C. MOORE (ed.), *Treatise on Invertebrate Palaeontology*. Part R Arthropoda, 2: R400–R651. – The Geological Society of America & University of Kansas.
- GORE, R.H. 1971. *Megalobrachium poeyi* (Crustacea, Decapoda, Porcellanidae): comparison between larval development in Atlantic and Pacific specimens reared in the laboratory. – *Pacific Science* **25**: 404–425.
- GRAUR, D. & W. MARTIN 2004. Reading the entrails of chickens: molecular time scales of evolution and the illusion of precision. – *Trends in Genetics* **20**: 80–86.
- GURNEY, R. 1942. Larvae of decapod Crustacea **129**: 1–306. – Ray Society, London.
- HAAN, W. DE 1833–1850. Crustacea. In: P.F. VON SIEBOLD (ed.), *Fauna Japonica sive descriptio animalium, quae in itinere per Japoniam, jussu et auspiciis superiorum, qui summum in India Batava Imperium tenent, suscepto, annis 1823–1830 collegit, notis, observationibus et adumbrationibus illustravit*. Fasc. 1–8 ix–xvi, vii–xvii, i–xxxii, 1–243, pls. I–LV, 1–2, A–Q (apud auctorem, Lugduni Batavorum & J. Müller & Co., Amstelodami).
- HAYE, P.A., Y.K. TAM & I. KORNFIELD 2002. Molecular phylogenetics of mole crabs (Hippidae: *Emerita*). – *Journal of Crustacean Biology* **22**: 903–915.
- HAYWORTH, A.H. 1825. A new binary arrangement of the macruran Crustacea. – *Philosophical Magazine and Journal* **65**: 183–184.
- HEADS, M. 2005. Dating nodes on molecular phylogenies: a critique of molecular biogeography. – *Cladistics* **21**: 62–78.
- HENDERSON, J.R. 1888. Report on the Anomura collected by H.M.S. Challenger during the years 1873–76. – *Scientific Results of the Exploratory Voyage of HMS Challenger (Zoology)* **27**: i–xi, 1–221. Her Majesty's Stationary Office, Edinburgh etc.
- HINCH, G.W. 1980. Spermiogenesis in *Coenobita clypeatus*. I. Sperm structure. – *International Journal of Invertebrate Reproduction and Development* **2**: 189–198.
- HYDEN, F.M. & J. FOREST 1980. An *in situ* hermit crab from the early Miocene of southern New Zealand. – *Palaeontology* **23**: 471–474.
- JACQUINOT, H. 1846. J.B. Hombron et H. Jacquinot, Atlas d'Histoire Naturelle Zoologie par MM Hombron et Jacquinot, chirurgiens de l'expédition. In: Voyage au Pole Sud et dans l'Océanie sur les corvettes l'Astrolabe et la Zélée exécuté par ordre du roi pendant les années 1837–1838–1839–1840 sous le commandement de M. Dumont-D'Urville capitaine de vaisseau publié sous les auspices de département de marine et sous la direction supérieure de M. Jacquinot, capitaine de Vaisseau, commandant de la Zélée. Crustacés, pls. 1–9. – Gide et Cie, Paris.
- JAGT, J.W.M., R.H.B. FRAAIJE & B.W.M. VAN BAKEL 2000. Late Cretaceous decapod crustacean faunas of northeast Belgium and the southeast Netherlands. – *Studia et Ricerche, Associazioni Amici del Museo – Museo Civico "G. Zannato," Montecchio Maggiore (Vicenza)*, 6 October 2000: 17–42.
- JAGT, J.W.M., B.W.M. VAN BAKEL, R.H.B. FRAAIJE & C. NEUMANN 2006. *In situ* fossil hermit crabs (Paguroidea) from northeast Europe and Russia. Preliminary data on new records. – *Revista Mexicana de Ciencias Geológicas* **23**: 364–369.
- JONES, W.J. & E. MACPHERSON 2007. Molecular phylogeny of the East Pacific rise squat lobsters of the genus *Munidopsis* (Decapoda: Galatheidae) with the descriptions of seven new species. – *Journal of Crustacean Biology* **27**: 477–501.
- KARASAWA, H. 2002. Fossil uncinidean and anomalan Decapoda (Crustacea) in the Kitakyushu Museum and Institute of Natural History. – *Bulletin of the Kitakyushu Museum of Natural History* **21**: 13–16.
- LAMARCK, J.B.P.A. 1818. Histoire naturelle des animaux sans vertèbres, présentant leurs caractères généraux et particuliers de ces animaux, leur distribution, leurs classes, leurs familles, leurs genres, et la citation des principales espèces qui s'y rapportent; précédé d'une introduction offrant la détermination des caractères essentiels de l'animal, sa distinction du végétal et des autres corps naturels, enfin, l'exposition des principes fondata-

- mentaus de zoologie, Vol. 5: 1–612. – Déterville and Verdière, Paris.
- LATREILLE, P.A. 1802: Histoire naturelle, générale et particulière, des crustacés et des insectes, Vol. 3: 1–480. – F. Dufart, Paris.
- LATREILLE, P.A. 1816. Les crustacés, les arachnides et les insectes. *In*: G. CUVIER, Le règne animal distribué d'après son organisation, pour servir de base à l'histoire naturelle des animaux, et d'introduction à l'anatomie comparée, Vol. 3: xxix, 1–653. – Deterville, Paris.
- LATREILLE, P.A. 1825. Familles naturelles du règne animal, exposées succinctement et dans un ordre analytique, avec l'indication de leurs genres. – J.-B. Baillière, Paris, 570 pp.
- LATREILLE, P.A. 1829. Crustacés, Arachnides et partie des Insectes. Pp. 1–39 *in*: G. CUVIER, Le règne animal distribué d'après son organisation, pour servir de base à l'histoire naturelle des animaux, et d'introduction à l'anatomie comparée (2<sup>nd</sup> edn.) 4: xxvii, 1–653. – Deterville, Paris.
- LATREILLE, P.A. 1831. Cours d'entomologie ou de l'histoire naturelle des Crustacés des Arachnides, des Myriopodes et des Insectes. Exposition méthodique des ordres, des familles et des genres des trois premières classes. – Roret, Paris. xii, 568 pp.
- LEACH, W.E. 1820. Galathéadées. – Dictionnaire des Sciences Naturelles **18**: 49–56.
- LEBOUR, M.V. 1943. The larvae of the genus *Porcellana* (Crustacea Decapoda) and related forms. – Journal of the Marine Biological Association United Kingdom **43**: 721–737.
- LEMAITRE, R., P.A. McLAUGHLIN & U. SORHANNUS 2009. Phylogenetic relationships within the Pylochelidae (Decapoda: Anomura: Paguroidea): A cladistic analysis based on morphological characters. – Zootaxa **2022**: 1–14.
- LINNAEUS, C. 1758. Systema naturae per regna tria naturae, secundum classes, ordines, genera, species, cum characteribus, differentiis, synonymis locis (10<sup>th</sup> edn.) 1: i–ii, 1–824 (Holmiae).
- MACDONALD, J.D., R.B. PIKE & D.I. WILLIAMSON 1957. Larvae of the British species of *Diogenes*, *Pagurus*, *Anapagurus* and *Lithodes* (Crustacea, Decapoda). – Proceedings of the Zoological Society of London **128**: 209–257.
- MACLEAY, W.S. 1838. Illustrations of the Annulosa of South Africa; being a portion of the objects of natural history chiefly collected during an expedition to the interior of South Africa, under the direction of Dr. Andrew Smith, during the years 1834, 1835 and 1836, fitted out by “The Cape of Good Hope Association for exploring Central Africa.” Pp. 1–75 *in*: A. SMITH, Illustrations of the Zoology of South Africa (Invertebrate). – Smith, Elder & Co., London.
- MACHORDOM, A. & E. MACPHERSON 2004. Rapid radiation and cryptic speciation in squat lobsters of the genus *Munida* (Crustacea, Decapoda) and related genera in the South West Pacific: molecular and morphological evidence. – Molecular Phylogenetics and Evolution **33**: 259–279.
- MACPHERSON, E. & A. MACHORDOM 2000. *Raymunida*, new genus (Decapoda: Anomura: Galatheidae) from the Indian and Pacific Oceans. – Journal of Crustacean Biology **20**, Special number 2: 253–258.
- MACPHERSON, E. & A. MACHORDOM 2001. Phylogenetic relationships of species of *Raymunida* (Decapoda: Galatheidae) based on morphology and mitochondrial cytochrome oxidase sequences, with the recognition of four new species. – Journal of Crustacean Biology **21**: 696–714.
- MACPHERSON, E., W. JONES & M. SEGONZAC 2005. A new squat lobster family of Galatheoidea (Crustacea, Decapoda, Anomura) from the hydrothermal vents of the Pacific-Antarctic Ridge. – Zoosystema **27**: 709–723.
- MANTELATTO, F.L.M., R. ROBLES, R. BIAGI & D.L. FELDER 2006. Molecular analysis of the taxonomic and distributional status for the hermit crab genera *Loxopagurus* Forest, 1964 and *Isocheles* Stimpson, 1858 (Decapoda, Anomura, Diogenidae). – Zoosystema **28**: 495–506.
- MARTIN, J.W. & L.G. ABELE 1986. Phylogenetic relationships of the genus *Aegla* (Decapoda: Anomura: Aegliidae), with comments on anomuran phylogeny. – Journal of Crustacean Biology **6**: 576–616.
- MARTIN, J.W. & G.E. DAVIS 2001. An updated classification of the Recent Crustacea. – Natural History Museum of Los Angeles County, Science Series **39**: 1–124.
- McLAUGHLIN, P.A. 1983a. A review of the phylogenetic position of the Lomidae (Crustacea: Decapoda: Anomala). – Journal of Crustacean Biology **3**: 431–437.
- McLAUGHLIN, P.A. 1983b. Hermit crabs – are they really polyphyletic? – Journal of Crustacean Biology **3**: 608–621.
- McLAUGHLIN, P.A. & J. FOREST 1997. Crustacea Decapoda: *Diacanthurus* gen. nov., a new genus of hermit crabs (Paguridae) with both Recent and fossil representation, and the descriptions of two new species. *In*: CROSNIER, A. (ed.), Résultats des Campagnes MUSORSTOM, **18**. – Mémoires du Muséum National d'Histoire Naturelle **176**: 236–259.
- McLAUGHLIN, P.A. & L.B. HOLTHUIS 1985. Anomura versus Anomala. – Crustaceana **49**: 204–209.
- McLAUGHLIN, P.A. & R. LEMAITRE 1997. Carcinization – fact or fiction? I. Evidence from adult morphology. – Contributions to Zoology **67**: 79–123.
- McLAUGHLIN, P.A. & R. LEMAITRE 2001a. Aspects of evolution in the anomuran superfamily Paguroidea: one larval prospective. – Invertebrate Reproduction and Development **38**: 159–169.
- McLAUGHLIN, P.A. & R. LEMAITRE 2001b. A new family for a new genus and new species of hermit crab of the superfamily Paguroidea (Decapoda: Anomura) and its phylogenetic implications. – Journal of Crustacean Biology **21**: 1062–1076.
- McLAUGHLIN, P.A. & R. LEMAITRE 2008. Larvae of two species of *Trizocheles* (Decapoda: Anomura: Paguroidea: Trizochelinae), description of the adult of one, and preliminary implications of development on pylochelid phylogeny. – Zootaxa **1911**: 52–68.
- McLAUGHLIN, P.A. & R. LEMAITRE 2009. A new classification for the Pylochelidae (Decapoda: Anomura: Paguroidea) and descriptions of new taxa. – The Raffles Bulletin of Zoology, Supplement **20**: 159–231.
- McLAUGHLIN, P.A. & J.M. PAUL 2002. Abdominal tergite and pleopod changes in *Lithodes aequispinus* Benedict, 1895 (Decapoda: Anomura: Lithodidae) from megalopa to juvenile. – Proceedings of the Biological Society of Washington **115**: 138–147.

- McLAUGHLIN, P.A., R. LEMAITRE & U. SORHANNUS 2007. Hermit crab phylogeny: A reappraisal and its "fall-out". – *Journal of Crustacean Biology* **27**: 97–115.
- McLAUGHLIN, P.A., R. LEMAITRE & C.C. TUDGE 2004. Carcinization in the Anomura – fact or fiction? Part II. Evidence from larval, megalopal and early juvenile development. – *Contributions to Zoology* **73**: 165–205.
- McLAUGHLIN, P.A., K. ANGER, A. KAFFENBERGER & G.A. LOVRICH 2001. Megalopal and early juvenile development in *Lithodes santolla* (Molina) (Decapoda: Anomura: Paguroidea: Lithodidae), with notes on zoeal variation. – *Invertebrate Reproduction and Development* **40**: 53–67.
- McLAUGHLIN, P.A., K. ANGER, A. KAFFENBERGER & G.A. LOVRICH 2003. Larval and early juvenile development in *Paralomis granulosa* (Jacquinot) (Decapoda: Anomura: Paguroidea: Lithodidae), with emphasis on abdominal changes in megalopal and crab stages. – *Journal of Natural History* **37**: 1433–1452.
- MERTIN, H. 1941. Decapode Krebse aus dem subhercynen und Braunschweiger Emscher und Untersenon. – *Nova Acta Leopoldina* **10**: 149–264.
- MIERS, E.J. 1876. Descriptions of some new species of Crustacea, chiefly from New Zealand. – *Annals and Magazine of Natural History* (4) **17**: 218–229.
- MILNE-EDWARDS, A. 1880. Report on the results of dredging, under the supervision of Alexander Agassiz, in the Gulf of Mexico, and in the Caribbean Sea, 1877, 78, 79, by the United States Coast Survey steamer "Blake", Lieut.-Commander C.D. Sigsbee, U.S.N., and Commander J.R. Bartlett, U.S.N., commanding. VIII. Études préliminaires sur les Crustacés. – *Bulletin of the Museum of Comparative Zoology, Harvard College*, **8**: 1–68.
- MILNE EDWARDS, H. 1836. Observations zoologiques sur les Pagures et description d'un nouveau genre de la tribu des Paguriens. – *Annales des Sciences Naturelles Zoologie, Paris* (2) **6**: 257–288.
- MILNE EDWARDS, H. 1837. Histoire naturelle des Crustacés, comprenant l'anatomie, la physiologie et la classification de ces animaux, Vol. 2: 1–532. – *Librairie Encyclopédique de Roret, Paris*.
- MORRISON, C.L., A.W. HARVEY, S. LAVERY, K. TIEU, Y. HUANG & C.W. CUNNINGHAM 2002. Mitochondrial gene rearrangements confirm the parallel evolution of the crab-like body form. – *Proceedings of the Royal Society* **269**: 345–350.
- ORTMANN, A. 1892. Die Decapoden-Krebse des Strassburger Museum, mit besonderer Berücksichtigung der von Herrn Dr. Doederlein bei Japan und bei den Liu-Kiu-Inseln gesammelten und zur Zeit im Strassburger Museum aufbewahrten Formen. IV. Die Abtheilungen Galatheidea und Paguridea. – *Zoologische Jahrbücher, Abtheilung für Systematik, Geographie und Biologie der Thiere* **6**: 241–326.
- ORTMANN, A. 1896. Das System der Decapoden-Krebse. – *Zoologische Jahrbücher, Abtheilung für Systematik, Geographie und Biologie der Thiere* **9**: 409–453.
- PALMER, A.R. 2004. Symmetry breaking and the evolution of development. – *Science* **306**: 828–833.
- PAUL'SON, O. 1875. Izsledovaniya rakoobraznykh krasnago morya s zametkami otnositel'no rakoobraznykh drugikh morei. Chast' 1. Podophthalmata i Edriophthalmata (Cumacea). – S.V. Kul'zhenko, Kiev, i–xiv + 144 pp. [Studies on Crustacea of the Red Sea with notes regarding other seas. Podophthalmata and Edriophthalmata (Cumacea).] Translation, Israel Program for Scientific Translations, 1961, National Science Foundation and Smithsonian Institution.
- PÉREZ-LOSADA, M., C.G. JARA, G. BOND-BUCKUP & K.A. CRANDALL 2002a. Phylogenetic relationships among the species of *Aegla* (Anomura: Aeglidae) freshwater crabs from Chile. – *Journal of Crustacean Biology* **22**: 304–313.
- PÉREZ-LOSADA, M., C.G. JARA, G. BOND-BUCKUP, M.L. PORTER & K.A. CRANDALL 2002b. Phylogenetic position of the freshwater anomuran family Aeglidae. – *Journal of Crustacean Biology* **22**: 670–676.
- PÉREZ-LOSADA, M., G. BOND-BUCKUP, C.S. JARA & K.A. CRANDALL 2004. Molecular systematics and biogeography of the southern South American freshwater "crabs" *Aegla* (Decapoda: Anomura: Aeglidae) using multiple heuristic tree search approaches. – *Systematic Biology* **53**: 767–780.
- PORTER, M.L., M. PÉREZ-LOSADA & K.A. CRANDALL 2005. Model-based multi-locus estimation of decapod phylogeny and divergence times. – *Molecular Phylogenetics and Evolution* **37**: 355–369.
- RETZIUS, G. 1909. Die Spermien der Crustaceen. – *Biologische Untersuchungen* **14**: 1–54.
- RICHTER, S. & G. SCHOLTZ 1994. Morphological evidence for a hermit crab ancestry of lithodids (Crustacea, Decapoda, Anomala, Paguroidea). – *Zoologischer Anzeiger* **223**: 187–219.
- SAINT LAURENT, M. DE 1979. Vers une nouvelle classification des Crustacés Décapodes Reptantia. – *Bulletin de l'Office des Pêches République Tunisienne (Tunisia), Ministère de l'Agriculture* **3**: 15–31.
- SAMUELLE, G. 1819. The Entomologist's Useful Compendium, 1st edn., 496 pp.
- SCHOLTZ, G. & S. RICHTER 1995. Phylogenetic systematics of the reptantian Decapoda (Crustacea, Malacostraca). – *Zoological Journal of the Linnean Society* **113**: 289–328.
- SCHRAM, F.R. 1986. Crustacea. – Oxford University Press, New York, 606 pp.
- SCHRAM, F.R. 2001. Phylogeny of decapods: moving towards a consensus. – *Hydrobiologia* **449**: 1–20.
- SCHWEITZER, C.E. & R.M. FELDMANN 2000. First notice of the Chirostylidae (Decapoda) in the fossil record and new Tertiary Galatheidae (Decapoda) from the Americas. – *Bulletin of the Mizunami Fossil Museum* **27**: 147–165.
- SCHWEITZER, C.E. & R.M. FELDMANN 2001. New Cretaceous and Tertiary decapod crustaceans from western North America. – *Bulletin of the Mizunami Fossil Museum* **28**: 173–210.
- SCHWEITZER, C.E., G. GONZÁLEZ-BARBA, R.M. FELDMANN & D.A. WAUGH 2005. Decapoda (Thalassinidea and Paguroidea) from the Eocene Bateque and Tepetate Formations, Baja California Sur, Mexico: Systematics, cuticle microstructure and paleoecology. – *Annals of Carnegie Museum* **74**: 275–293.
- SHAUL, S. & D. GRAUR 2002. Playing chicken (*Gallus gallus*): methodological inconsistencies of molecular di-

- vergence data estimates due to secondary calibration points. – *Gene* **300**: 59–61.
- SLUYS, R. 1989. Rampant parallelism: an appraisal of the use of nonuniversal derived characters states in phylogenetic reconstruction. – *Systematic Zoology* **38**: 350–370.
- SMITH, S.I. 1882. XVII. Report on the Crustacea. Part I. Decapoda. Reports on the results of dredging, under the supervision of Alexander Agassiz, on the east coast of the United States, during the summer of 1880, by the U.S. Coast Survey Steamer “Blake”, Commander J.R. Bartlett, U.S.N. commanding. – *Bulletin of the Museum of Comparative Zoology at Harvard College* **10** (1880): 1–108.
- SMITH, S.I. 1883. Preliminary report on the Brachyura and Anomura dredged in deep water off the south coast of New England by the United States Fish Commission in 1880, 1881, and 1882. – *Proceedings of the United States National Museum* **6**: 21–57.
- SPEARS, T., L.G. ABELE & W. KIM 1993. The monophyly of brachyuran crabs: A phylogenetic study based on 18S rRNA. – *Systematic Biology* **41** (1992): 446–461.
- STEBBING, T.R.R. 1914. South African Crustacea (Part VII of S.A. Crustacea, for the Marine Investigations in South Africa). – *Annals of the South African Museum* **15**: 1–55.
- STERNBERG, R. VON 1996. Carcinization as an underlying synapomorphy for the decapod crustacean taxon Meiuira. – *Evolutionary Theory* **11**: 153–162.
- STIMPSON, W. 1858. Prodrömus descriptionis animalium vertebratorum, quae in expeditione ad oceanum Pacificum septentrionalem, a Republica Federate missa, Cadwal-daro Ringgold et Johanne Rodgers ducibus, observavit et descripsit, Vol. VII. – [Preprint (December 1858) from] *Proceedings of the Academy of Natural Sciences of Philadelphia* 1858: 225–252.
- TAVARES, M. 2003. A new theoretical approach for the study of monophyly of the Brachyura (Crustacea: Decapoda) and its impact on the Anomura. – *Memoirs of Museum Victoria* **60**: 145–149.
- TIRELLI, T., D. PESSANI, D. SILVESTRO & C. TUDGE 2008. Reproductive biology of Mediterranean hermit crabs: fine structure of spermatophores and spermatozoa of *Diogenes pugilator* (Decapoda: Anomura) and its bearing on a sperm phylogeny of Diogenidae. – *Journal of Crustacean Biology* **28**(3): 534–542.
- TSANG, L.M., K.Y. MA, S.T. AHYONG, T.-Y. CHAN & K.H. CHU 2008. Phylogeny of Decapoda using two nuclear protein-coding genes: Origin and evolution of the Reptantia. – *Molecular Phylogenetics and Evolution* **48**: 359–368.
- TUDGE, C.C. 1992. Comparative ultrastructure of hermit crab spermatozoa (Decapoda: Anomura: Paguroidea). – *Journal of Crustacean Biology* **12**: 397–409.
- TUDGE, C.C. 1997a. Spermatological evidence supports the taxonomic placement of the Australian endemic hairy stone crab, *Lomis hirta* (Decapoda: Anomura: Lomidae). – *Memoirs of the Museum of Victoria* **56**: 235–244.
- TUDGE, C.C. 1997b. Phylogeny of the Anomura (Decapoda, Crustacea): Spermatozoa and spermatophore morphological evidence. – *Contributions to Zoology* **67**: 125–141.
- TUDGE, C.C. & B.G.M. JAMIESON 1991. Ultrastructure of the mature spermatozoon of the coconut crab *Birgus latro* (Coenobitidae: Paguroidea: Decapoda). – *Marine Biology* **108**: 395–402.
- TUDGE, C.C. & B.G.M. JAMIESON 1996a. Spermatophore and spermatozoal morphology in the Porcellanidae. I. *Alia-porcellana suluensis* and *Pisidia longicornis* (Decapoda: Anomura: Porcellanidae). – *Crustacean Research* **25**: 73–85.
- TUDGE, C.C. & B.G.M. JAMIESON 1996b. Spermatophore and spermatozoal morphology in the Porcellanidae. II. The genera *Petrolisthes* and *Polyonyx* (Decapoda: Anomura). – *Journal of Crustacean Biology* **16**: 535–546.
- TUDGE, C.C. & D.M. SCHELTINGA 2002. Spermatozoal morphology of the freshwater anomuran *Aegla longirostri* Bond-Buckup & Buckup 1994 (Crustacea: Decapoda: Aeglidae) from South America. – *Proceedings of the Biological Society of Washington* **115**: 118–128.
- TUDGE, C.C., B.G.M. JAMIESON, L. SANDBERG & C. ERSÉUS 1998. Ultrastructure of the mature spermatozoon of the king crab *Lithodes maja* (Lithodidae, Anomura, Decapoda): further confirmation of a lithodid-pagurid relationship. – *Invertebrate Biology* **117**: 57–66.
- TUDGE, C.C., D.M. SCHELTINGA & B.G.M. JAMIESON 1999. Spermatozoal ultrastructure in the Hippoidea (Anomura, Decapoda). – *Journal of Submicroscopical Cytology and Pathology* **31**: 1–13.
- TUDGE, C.C., D.M. SCHELTINGA & B.G.M. JAMIESON 2001. Spermatozoal morphology in the “symmetrical” hermit crab *Pylocheles* (*Bathycheles*) sp. (Crustacea, Decapoda, Anomura, Paguroidea, Pylochelidae). – *Zoosystema* **23**: 117–130.
- WATERMAN, T.H. & F.A. CHACE JR. 1960. The Physiology of Crustacea, Vol. 1: Metabolism and Growth. – Academic Press, New York. 670 pp.
- WHITE, A. 1856. Some remarks on Crustacea of the genus *Lithodes*, with a brief description of a species apparently hitherto unrecorded. – *Proceedings of the Zoological Society of London* 1856: 132–135.
- WHITEAVES, J.F. 1874. On recent deep-sea dredging operations in the Gulf of St. Lawrence. – *American Journal of Science* (3) **7**: 210–219.
- ZAKLAN, S.D. 2002. Review of the family Lithodidae (Crustacea: Anomura: Paguroidea): Distribution, Biology and fisheries. *In*: *Crabs in Cold Water Regions. Biology, Management and Economics*. – Alaska Sea Grant College Program AK.SG-02-01: 751–843.

## Appendix: influential classifications of the Anomura 1816–1986

### LATREILLE (1816)

Section “Anomaux” or Anomalina

Albunées  
Hippes  
Remipèdes  
Pagures  
Porcellanes  
Galathées

### H. MILNE EDWARDS (1837)

Section Anomoures

Family Apterures  
Tribe Dromiens  
Tribe Homoliens [included  
*Lithodes*, *Lomis*]  
Tribe Raniniens  
Tribe Pactoliens  
Family Ptérygures  
Tribe Porcellaniens  
Tribe Hippiciens  
Tribe Paguriens

### DE HAAN (1841)

Anomala

Family Galatheidea  
Family Porcellanidea  
Family Hippidea  
Family Paguroidea  
Family Lithodeacea

### STIMPSON (1858)

Anomoura

Teleosomi  
Synopsis Dromideorum  
[included Latreillidea,  
Homolidea, Raninidea]  
Schizosomi  
Synopsis Porcellanideorum  
Synopsis Hippideorum  
Synopsis Lithodideorum  
[included *Lomis*]  
Synopsis Pagurideorum

### DANA (1852)

Tribe Anomoura

Section I. Anomoura Superiora  
Subtribe Dromidea  
Families Dromidae, Cymopolidae  
Subtribe Bellidea  
Family Bellidae  
Subtribe Raninidea

Family Raninidae  
Section II. Anomoura Media  
Subtribe Hippidea  
Family Hippidae  
Subtribe Porcellanidea  
Family Porcellanidae  
Section III. Anomoura Submedia  
Subtribe Lithodea  
Family Lithodidae  
Section IV. Anomoura Inferiora  
Subtribe Paguridea  
Families Paguridae, Cenobitidae  
Subtribe Aegleidea  
Family Aeglidae  
Subtribe Galatheidea  
Family Galatheidae

### BOAS (1880)

Section Anomala

Families Hippidae, Paguridae, Galatheidae

### ORTMANN (1896)

Reptantia [abandoned use of Anomura]

Division Thalassinidea  
Division Paguridea  
Division Galatheidea  
Division Hippidea  
Division Dromiidea

### BORRADAILE (1906)

Suborder Anomura

Tribe Hippidea  
Tribe Galatheidea  
Tribe Thalassinidea  
Tribe Paguridea  
Subtribe Pagurinea  
Subtribe Lithodinea

### BOUVIER (1940)

Section Anomura

Tribu I. Paguridea  
Families Pylochelidae, Paguridae,  
Lomisidae, Lithodidae  
Tribu II. Galatheidea  
Families Aeglidae, Chirostylidae,  
Galatheidae, Porcellanidae  
Tribu III. Hippidea  
Families Albuneidae, Hippidae

### GURNEY (1942)

Superfamily Galatheidea

Families Aeglidae, Galatheidae, Porcellanidae  
Superfamily Paguridea  
Families Paguridae, Lithodidae  
Superfamily Hippidea  
Superfamily Dromiacea



**MACDONALD et al. (1957)**

## Suborder Anomura

Superfamily Thalassinoidea

Superfamily Coenobitoidea

Families Pylochelidae, Diogenidae,

Coenobitidae, Lomisidae

Superfamily Paguroidea

Families Paguridae, Lithodidae

**WATERMAN & CHACE (1960)**

## Section Anomura

Superfamily Galatheoidea

Superfamily Paguroidea

Superfamily Hippidea

**McLAUGHLIN (1983)**

(included families only for Paguroidea)

Infraorder Anomala [replaced by Anomura

by McLAUGHLIN &amp; HOLTHUIS 1985]

Superfamily Galatheoidea

Superfamily Lomoidea

Superfamily Hippoidea

Superfamily Paguroidea

Families Pomatochelidae, Diogenidae,

Coenobitidae, Paguridae, Parapaguridae,

Lithodidae

**BOWMAN & ABELE (1982)**

## Infraorder Anomura

Superfamily Coenobitoidea

Superfamily Paguroidea

Superfamily Galatheoidea

Superfamily Hippoidea

**SCHRAM (1986)**

## Infraorder Anomala

Families Pomatochelidae, Diogenidae,

Coenobitidae, Lomisidae, Paguridae,

Lithodidae, Parapaguridae, Galatheidae,

Aeglidae, Chirostylidae, Porcellanidae,

Albuneidae, Hippidae

**Added in Proof**

AHYONG et al. (2009) just published new insights into anomuran phylogeny that further accent both the advances and conflicts associated with anomuran studies whether they are morphological, spermatological, developmental, or molecular. With an abundantly expanded molecular database for the Galatheoidea the unexpected results the authors found have drastically undermined the currently accepted concepts of relationships within the superfamily. Thus it is not surprising that with only minimal additions to the paguroid molecular database catastrophic disarray is portrayed for this superfamily.

AHYONG, S.T., K.E. SCHNABEL & E.W. MAAS 2009. Anomuran phylogeny: new insights from molecular data. Pp. 399–414 *in*: J.W. MARTIN, K.A. CRANDALL & D.L. FELDER (eds.), Decapod Crustacean Phylogenetics; Crustacean Issues 18. CRC Press, Taylor & Francis Group, Boca Raton, London, New York.