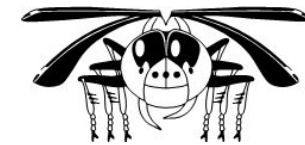


Senckenberg Deutsches Entomologisches Institut

Eberswalder Str. 90, 15374 Müncheberg, Germany



Hemimetabola Collection: Earwigs – Dermaptera (27.10.2010)

Curator: Dr. Stephan M. Blank, sblank@senckenberg.de, phone: +49/33432/736983730

Technical assistant: Angelika Weirauch, aweirauch@senckenberg.de, phone: +49/33432/736983721

SPECIES	SPECIMENS	PA	NA	NT	OR	ET	AU	TYPE MATERIAL
● ANISOLABIDIDAE								
Aborolabis mauritanica (Lucas, 1846)	5	X						
Anisolabis alata Jansen, 1974	2	X						
Anisolabis littorea (White, 1846)	3						X	
Anisolabis maindroni (Borelli, 1911)	1				X			
Anisolabis maritima (Bonelli, 1832)	19		X	X	X			Anisolabis addita Burr, 1913, holotype
Anisolabis rufescens Kirby, 1891	1					X		
Carcinophora americana Palisot de Beauvois, 1817	1			X				
Carcinophora castetsi de Bormans, 1897	1				X			
Carcinophora occidentalis (Kirby, 1896)	2						X	
Ctenisolabis togoensis Verhoeff, 1902	3				X	X		
Euborellia annulipes (Lucas, 1847)	49	X	X	X	X	X		
Euborellia femoralis (Dohrn, 1863)	5			X	X			
Euborellia ituriensis Brindle, 1978	1					X	X	
Euborellia janeirensis (Dohrn, 1864)	1			X				
Euborellia moesta (Gené, 1839)	11	X				X		
Euborellia plebeja (Dohrn, 1863)	20				X			
Euborellia stali (Dohrn, 1864)	15	X	X		X	X		
Euborellia uruguayensis Brindle, 1971	1			X				
Gonolabina kuhlgatzi Burr, 1911	2			X				
Gonolabis electa Burr, 1910	2				X	X		
Gonolabis javana (de Bormans, 1883)	2				X		X	
Gonolabis marginalis (Dohrn, 1864)	9				X			
Gonolabis maxima (Brullé, 1838)	8	X						
Idolopsalis riveti Borelli, 1910	3			X				

SPECIES	SPECIMENS	PA	NA	NT	OR	ET	AU	TYPE MATERIAL
Isolabis howardi (Burr, 1911)	9			X				
Metisolabis malgacha (Burr, 1904)	2					X		
Parisopsalis spryi Burr, 1914	2						X	
Platylabia major Dohrn, 1867	2				X			
Titanolabis colossea (Dohrn, 1864)	4						X	
● APACHYIDAE								
Apachyus chartaceus de Haan, 1842	1					X		
Apachyus reichardi Karsch, 1886	2					X		
● ARIXENIDAE								
Xeniaria jacobsoni (Burr, 1912)	2				X			
● CARCINIPHORIDAE								
Aborolabis vicina Burr, 1910	3				X			
Gonolabis cavaleriei (Dohrn, 1921)	2				X			
Gonolabis undulata (Bey Bienko, 1959)	2				X			
● CHELISOCHIDAE								
Adiathetus shelfordi Burr, 1900	1				X			
Chelisothes flavipennis (Fabricius, 1793)	2					X		
Chelisothes morio (Fabricius, 1775)	23				X	X	X	
Chelisothes tenebrator (Kirby, 1891)	2				X			
Hamaxas feae (de Bormans, 1894)	6				X		X	
Hamaxas nigrorufus (Burr, 1902)	2				X			
Prorerus ludekingi (Dohrn, 1865)	3				X			
Proreus fuscipennis (de Haan, 1842)	4				X		X	
Proreus simulans (Stål, 1860)	31				X			
Schizochelisothes brevipennis (Borelli, 1923)	9				X			
Schizochelisothes formosanus (Burr, 1912)	2				X			
● FORFICULIDAE								
Allodahlia ancylura (Dohrn, 1865)	2				X			
Allodahlia coriacea (de Bormans, 1894)	1				X			
Allodahlia macropyga (Westwood, 1836)	3				X			
Allodahlia scabriuscula (Serville, 1839)	47				X			
Anechura asiatica Semenov, 1903	5	X						
Anechura bipunctata (Fabricius, 1781)	44	X						

SPECIES	SPECIMENS	PA	NA	NT	OR	ET	AU	TYPE MATERIAL
Anechura crinitata (Shiraki, 1905)	3				X			
Apterygida media Hagenbach, 1822	12	X						
Chelidura aptera (Megerle, 1825)	2	X						
Chelidura mutica Krauss, 1886	1	X						
Chelidura pyrenaica (Bonelli, 1832)	2	X						
Chelidurella guentheri (Galvagni, 1993)	20	X						
Cordax ceylonicus (Motschulsky, 1863)	1				X			
Cordax vandermeermohriMeno Menozzi, 1933	2				X			
Cosmiola simplex Bey-Bienko, 1959	1				X			
Diaperasticus bonchampsii Burr, 1904	1				X			
Diaperasticus erythrocephalus (Olivier, 1791)	22					X		
Doru gracilis (Burmeister, 1838)	1			X				
Doru lineare (Eschscholtz, 1822)	86		X	X				
Elaunon bipartitus (Kirby, 1891)	5				X		X	
Eparchus biroii Burr, 1902	4						X	
Eparchus cruentatus Burr, 1909	1				X		X	
Eparchus forcipatus (de Haan, 1842)	18				X		X	
Eparchus insignis (de Haan, 1842)	8				X			
Eparchus mindanensis tenellus Günther, 1934	12				X			Eparchus mindanensis tenellus Günther, 1934, syntype
Eparchus simplex (de Bormans, 1894)	1				X			
Eudohnia metallica (Dohrn, 1865)	1				X			
Forficula aetolica Brunner, 1892	2	X						
Forficula auricularia Linné, 1758	168	X	X	X	X	X	X	
Forficula auriculata Linné, 1758	7	X						
Forficula brolemanni Borelli, 1907	2					X		
Forficula davidi Burr, 1905	1				X			
Forficula decipiens Gené, 1832	5	X						
Forficula harberei Burr, 1911	2				X			
Forficula ornata de Bormans, 1884	2				X			
Forficula paratomis Steinmann, 1985	1	X						
Forficula planicollis Kirby, 1891	17				X			
Forficula schlagintweiti (Burr, 1904)	10				X			
Forficula scudderii de Bormans, 1880	8	X						

SPECIES	SPECIMENS	PA	NA	NT	OR	ET	AU	TYPE MATERIAL
<i>Allostethus celebense</i> Burr, 1911	1				X			
<i>Allostethus indicum</i> (Burmeister, 1838)	1				X			
<i>Forcipula decolyi</i> de Bormans, 1900	5				X			
<i>Forcipula trispinosa</i> (Dohrn, 1863)	2				X			
<i>Gonolabidura astruci</i> Burr, 1911	4				X			
<i>Isolaboides kosswigi</i> (Burr, 1947)	1	X						
<i>Labidura riparia</i> (Pallas, 1773)	152	X	X	X	X	X	X	
<i>Labidura xanthopus</i> (Stål, 1855)	1			X				
<i>Nala lividipes</i> (Dufour, 1820)	24	X			X	X	X	
● PYGIDICRANIDAE								
<i>Cranopygia lueddemanni</i> Srivastava, 1984	1						X	<i>Cranopygia lueddemanni</i> Srivastava, 1984, holotype
<i>Cranopygia sauteri</i> (Burr, 1912)	3				X			
<i>Diplatys annandalei</i> Burr, 1911	1				X			
<i>Diplatys bormansi</i> Burr, 1910	2				X			
<i>Diplatys flavicollis</i> Shiraki, 1907	5				X			
<i>Echinosoma sumatranum</i> (de Haan, 1842)	6				X			
<i>Esphalmenus lativentris</i> (Philippi, 1863)	1			X				
<i>Esphalmenus silvestrii</i> (Borelli, 1902)	3			X				
<i>Parapsalis infernalis</i> (Burr, 1913)	7				X			<i>Chaetospania infernalis</i> Burr, 1913, lectotype, 6 paralectotypes
<i>Parapsalis laevis</i> Borelli, 1921	1				X			
<i>Tagalia burri</i> Hincks, 1955	2						X	
● SPONGIPHORIDAE								
<i>Chaetospania bakeri</i> Borelli, 1916	4				X			
<i>Chaetospania feae</i> de Bormans, 1894	24				X			
<i>Chaetospania ferox</i> Steinmann, 1984	1				X			
<i>Chaetospania foliata</i> (Burr, 1911)	1				X			
<i>Chaetospania fulvochracea</i> Borelli, 1923	2				X			<i>Chaetospania fulvochracea</i> Borelli, 1923, 2 syntypes
<i>Chaetospania kurseongae</i> Hebard, 1923	1				X			
<i>Chaetospania lanceolata</i> Borelli, 1926	5				X			
<i>Chaetospania nigriceps</i> (Kirby, 1891)	11				X		X	
<i>Chaetospania paederina</i> (Gerstaecker, 1883)	1					X		
<i>Chaetospania ridens</i> de Bormans, 1894	1				X			

SPECIES	SPECIMENS	PA	NA	NT	OR	ET	AU	TYPE MATERIAL
Chaetospania thoracica (Dohrn, 1867)	11				X		X	
Chaetospania volcana Burr, 1904	1					X		
Circolabia arcuata (Scudder, 1876)	29			X				Labia nodifer Hebard, 1917, 2 paratypes
Labia minor (Linné, 1758)	41	X	X	X	X	X		
Marava arachidis (Yersin, 1860)	19	X	X		X	X	X	
Marava feae (Dubrony, 1879)	2				X		X	
Marava nitida (Burr, 1904)	1					X		
Marava rotundata (Scudder, 1876)	3			X				
Mecomera brunnea Serville, 1839	1			X				
Mecomera chacoensis (Borelli, 1912)	1			X				
Nesogaster aculeatus (de Bormans, 1900)	4				X		X	
Nesogaster amoenus (Stål, 1855)	1				X		X	
Nesogaster ruficeps (Erichson, 1842)	5						X	
Paralabella annulata (Fabricius, 1793)	8			X				
Paralabella biolleyi (Borelli, 1906)	1			X				
Paralabella boettcheri (Borelli, 1923)	13				X			Labia boettcheri Borelli, 1923, 3 syntypes
Paralabella cicero Steinmann, 1990	2			X				Paralabella cicero Steinmann, 1990, holotype, 1 paratype
Paralabella conspicua (Borelli, 1906)	6			X				
Paralabella curvicauda (Motschulsky, 1863)	59	X		X	X	X		
Paralabella cyanescens (Borelli, 1909)	5			X				
Paralabella dorsalis (Burmeister, 1838)	10			X				
Paralabella lutea (de Bormans, 1894)	17				X			
Paralabella murrayi Kirby, 1900	3				X		X	
Paraspania brunneri (de Bormans, 1883)	3				X		X	
Pseudovostox truncatus Brindle, 1970	1					X		
Sparatta calverti Borelli, 1910	3			X				
Sparatta dentifera Rehn, 1901	1			X				
Sparatta flavipennula Rehn, 1903	1			X				
Sparatta pelvimetra Serville, 1839	1			X				
Sphingolabis hawaiiensis (de Bormans, 1882)	6				X		X	
Spirolabia pilicornis (Motschulsky, 1863)	19	X	X	X	X	X		
Spongiphora bormansi Burr, 1897	1			X				

SPECIES	SPECIMENS	PA	NA	NT	OR	ET	AU	TYPE MATERIAL
Spongiphora croceipennis Serville, 1831	5			X				
Spongovostox assiniensis (de Bormans, 1893)	2					X		
Spongovostox ferrugineus (Borelli, 1907)	1					X		
Spongovostox marginalis (Thunberg, 1827)	1					X		
Spongovostox mucronatus (Stål, 1860)	15				X		X	
Spongovostox quadrimaculatus (Stål, 1855)	2					X		
Spongovostox schwarzi (Caudell, 1907)	2			X				
Spongovostox semiflavus (de Bormans, 1894)	6				X			
Spongovostox tripunctatus (Borelli, 1907)	2					X		
Strongylopsalis iheringi Rehn, 1917	1			X				
Vostox brunneipennis (Serville, 1839)	3		X	X				
Vostox dubius (Moreira, 1931)	1			X				Spongovostox dubius Moreira, 1931, holotype