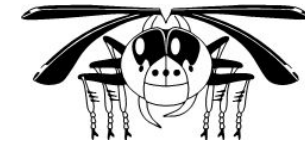


Senckenberg Deutsches Entomologisches Institut

Eberswalder Str. 90, 15374 Müncheberg, Germany



Hemimetabola Collection: Stoneflies – Plecoptera (27.10.2010)

Curator: Dr. Stephan M. Blank, sblank@senckenberg.de, phone: +49/33432/736983730

Technical assistant: Angelika Weirauch, aweirauch@senckenberg.de, phone: +49/33432/736983721

Please note that the data displayed here have not yet been verified (e.g. spellings). We are still working on completing this inventory.

SPECIES	SPECIMENS	PA	NA	NT	OR	ET	AU	TYPE MATERIAL
● AUSTROPERLIDAE								
Acruroperla atra (Sámal, 1921)	1						X	
Klapopteryx armillata Navás, 1928	2			X				Klapopteryx armillata Navás, 1928, holotype
Penturoperla barbata Illies, 1960	1			X				
● CAPNIIDAE								
Allocapnia pygmaea (Burmeister, 1839)	2		X					
Capnia atra Morton, 1896	1	X						
Capnia rara Zapekina-Dulkeit, 1970		X						
● CHLOROPERLIDAE								
Alloperla imbecilla (Say, 1823)	5		X					
Alloperla mediata (Navás, 1925)	1	X						Chloroperla mediata Navás, 1925, holotype
Alloperla serrata Needham & Claassen, 1925	35		X					
Chloroperla breviata Navás, 1918	3	X						
Chloroperla tripunctata (Scopoli, 1763)	24	X						
Isoptena serricornis (Pictet, 1841)	2	X						
Siphonoperla burmeisteri (Pictet, 1841)	6	X						
Siphonoperla graeca (Aubert, 1956)	3	X						
Siphonoperla montana (Pictet, 1841)	2	X						
Siphonoperla neglecta (Rostock, 1881)	4	X						
Siphonoperla spec.	2	X						
Siphonoperla torrentium (Pictet, 1841)	5	X						
Suwallia lineosa (Banks, 1918)	1		X					

SPECIES	SPECIMENS	PA	NA	NT	OR	ET	AU	TYPE MATERIAL
Suwallia pallidula (Banks, 1904)	17		X					
Sweltsa borealis (Banks, 1895)	2		X					
Sweltsa coloradensis (Banks, 1898)	4		X					
Sweltsa fidelis (Banks, 1920)	1		X					
Sweltsa lateralis (Banks, 1911)	3		X					
Sweltsa pacifica (Banks, 1895)	12		X					
Triznaka signata (Banks, 1895)	4		X					
Xanthoperla apicalis (Newman, 1836)	2	X						
● DIAMPHIPNOIDAE								
Diamphipnoa annulata (Brauer, 1869)	3			X				
Diamphipnoa helgae Illies, 1960	3			X				Diamphipnoa helgae Illies, 1960, holotype
Diamphipnoa virescentipennis (Blanchard, 1851)	1			X				Diamphipnoa virescentipennis (Blanchard, 1851, neotype)
Diamphipnopsis samali Illies, 1960	23			X				Diamphipnopsis samali Illies, 1960, lectotype, 20 paralectotypes
● EUSTHENIIDAE								
Eusthenia venosa (Tillyard, 1921)	2						X	
Neuroperla schedingi (Navás, 1930)	3			X				
Neuroperlopsis patris Illies, 1960	2			X				
● GRIPOPTERYGIDAE								
Antarctoperla michaelsoni (Klapálek, 1904)	7			X				Gripopteryx panguipullii Navás, 1929, 1 syntype
Ceratoperla fazi (Navás, 1934)	1			X				Notoperla fazi Navás, 1934, holotype
Gripopteryx reticulata Brauer, 1868	1			X				Klapopteryx zikanina Navás, 1932, holotype
Limnoperla jaffueli (Navás, 1928)	13		X					Gripopteryx jaffueli Navás, 1928, neotype
Senzilloides panguipullii (Navás, 1928)	1			X				Gripopteryx panguipullii Navás, 1928, 1 syntype
● LEUCTRIDAE								
Despaxia augusta (Banks, 1907)	1		X					
Leuctra boettcheria Navás,	1				X			
Leuctra braueri Kempny, 1898	1	X						
Leuctra cingulata Kempny, 1899	2	X						
Leuctra collaris Martynov, 1928	1	X						
Leuctra digitata Kempny, 1899	5	X						
Leuctra duplicata Claassen, 1923	1		X					

SPECIES	SPECIMENS	PA	NA	NT	OR	ET	AU	TYPE MATERIAL
<i>Leuctra fusca</i> (Linné, 1758)	7	X						
<i>Leuctra handlirschi</i> Kempny, 1898	3	X						
<i>Leuctra hippopus</i> Kempny, 1899	2	X						
<i>Leuctra inermis</i> Kempny, 1899	7	X						
<i>Leuctra moselyi</i> Morton, 1929	6	X						
<i>Leuctra nigra</i> (Olivier, 1811)	7	X						
<i>Leuctra teriolensis</i> Kempny, 1900	1	X						
<i>Pachyleuctra benlochi</i> (Navás, 1917)	2	X						
<i>Paraleuctra occidentalis</i> (Banks, 1907)	4		X					
<i>Rhopalopsole dentata</i> Klapálek, 1912					X			<i>Rhopalopsole dentata</i> Klapálek, 1912, holotype
● NEMOURIDAE								
<i>Amphinemura flavicollis</i> Klapálek, 1912	10				X			<i>Amphinemura flavicollis</i> Klapálek, 1912, 9 syntypes; <i>Amphinemura nigrigula</i> Navás, 1932, holotype
<i>Amphinemura maracandica</i> (McLachlan, 1875)	1	X						
<i>Amphinemura nigrigula</i> (Provancher, 1876)	1		X					
<i>Amphinemura standfussi</i> (Ris, 1902)	1	X						
<i>Amphinemura sulcicollis</i> (Stephens, 1836)	12	X						
<i>Amphinemura sulcicollis</i> (Stephens, 1836)	1	X						
<i>Austronemoura encoensis</i> Aubert, 1960	1			X				
<i>Austronemoura eudoxiae</i> Froehlich, 1960	1			X				
<i>Malenka depressa</i> (Banks, 1898)	4		X					
<i>Malenka flexura</i> (Claassen, 1923)	2		X					
<i>Nemoura avicularis</i> Morton, 1894	10	X						
<i>Nemoura brevilobata</i> (Klapálek, 1912)	14				X			<i>Protonemura brevilobata</i> Klapálek, 1912, 7 syntypes
<i>Nemoura cambrica</i> Stephens, 1836	1	X						
<i>Nemoura cinerea</i> (Retzius, 1783)	34	X						
<i>Nemoura humeralis</i> Pictet, 1836	1	X						
<i>Nemoura marginata</i> Pictet, 1836	6	X						
<i>Nemoura obtusa</i> Ris, 1902	1	X						
<i>Nemoura spec.</i>	5	X						
<i>Nemoura variegata</i> Olivier, 1811	53	X						
<i>Nemurella pictetii</i> (Klapálek, 1900)	4	X						
<i>Neofulla ariolata</i> (Navás, 1930)	1			X				

SPECIES	SPECIMENS	PA	NA	NT	OR	ET	AU	TYPE MATERIAL
Neonemura barrosi Navás, 1920	22			X				
Protonemura albanica Raušer, 1963	3	X						Protonemura albanica Raušer, 1963, holotype, 2 paratypes
Protonemura intricata (Ris, 1902)	3	X						
Protonemura lateralis (Pictet, 1836)	2	X						
Protonemura meyeri Pictet, 1841	4	X						
Protonemura nimborum (Ris, 1902)	5	X						
Protonemura nitida (Pictet, 1836)	2	X						
Soyedina nevadensis (Claassen, 1923)	2		X					
Zapada cinctipes (Banks, 1897)	3		X					
Zapata oregonensis (Claassen, 1923)	2		X					
● PELTOPERLIDAE								
Cryptoperla klapaleki Stark & Sivec, 2007	1				X			Peltoperla formosana Klapálek, 1913, holotype
Tallaperla cornelia (Needham & Smith, 1916)	1		X					
Yoraperla brevis (Banks, 1907)	1		X					
● PERLIDAE								
Agnetina capitata (Pictet, 1841)	5		X					
Anacroneuria antica (Navás, 1924)	1			X				
Anacroneuria genualis (Navás, 1932)	1			X				Neoperla genualis Navás, 1932, holotype
Anacroneuria hyalina (Pictet, 1841)	1			X				
Anacroneuria longicauda (Pictet, 1841)	1			X				
Anacroneuria melzeri (Navás, 1932)	1			X				Neoperla melzeri Navás, 1932, holotype
Chiliperla zonata Navás,	2			X				
Claassenia sabulosa (Banks, 1900)	3		X					
Dinocras cephalotes (Curtis, 1827)	14	X						
Dinocras megacephala (Klapálek, 1907)	1	X						
Flavoperla lucida (Klapálek, 1913)	1				X			Kiotina lucida Klapálek, 1913, holotype
Inconeuria porteri (Navás, 1919)	11			X				Neoperla porteri Navás, 1919, neotype
Kamimuria formosana (Klapálek, 1921)	1				X			Paragnetina formosana Klapálek, 1921, holotype
Kamimuria lepida Klapálek, 1913	2				X			Kamimuria lepida Klapálek, 1913, 2 syntypes; Tylopyge minor Klapálek, holotype
Kempnyella genualis (Navás, 1918)	1			X				
Kempnyella genualis (Navás, 1918)	5			X				

SPECIES	SPECIMENS	PA	NA	NT	OR	ET	AU	TYPE MATERIAL
Besdolus imhoffi (Pictet, 1841)	2	X						
Dictyogenus alpinus (Pictet, 1841)	9	X						
Dictyogenus fontium (Ris, 1896)	7	X						
Diura bicaudata (Linné, 1758)	1	X						
Diura nanseni (Kempny, 1900)	3	X						
Isogenoides colubrinus (Hagen, 1874)	3		X					
Isogenoides elongatus (Hagen, 1874)	3		X					
Isogenus nubecula Newman, 1833	8	X						
Isoperla bellona Banks, 1911	3		X					
Isoperla bilineata (Say, 1823)	2		X					
Isoperla difformis (Klapálek, 1909)	8	X						
Isoperla goertzi Illies, 1952	4	X						Isoperla görtzi Illies, 1952, holotype
Isoperla grammatica (Poda, 1761)	15	X						
Isoperla nana (Walsh, 1862)	12		X					
Isoperla obscura (Zetterstedt, 1840)	50	X						
Isoperla oxylepis (Despax, 1936)	9	X						
Isoperla quinquepunctata (Banks, 1902)	2		X					
Isoperla rivulorum (Pictet, 1841)	12	X						
Isoperla sobria (Hagen, 1874)	14		X					
Isoperla sordida Banks, 1906	2		X					
Isoperla spec.	5	X						
Isoperla sudetica (Kolenati, 1859)	8	X						
Isoperla transmarina (Newman, 1838)	1		X					
Isoperla tripartita Illies, 1954	3	X						
Isoperla viridinervis (Pictet, 1865)	2	X						
Megarcys signata (Hagen, 1874)	2		X					
Perlodes dispar (Rambur, 1842)	3	X						
Perlodes intricatus (Pictet, 1841)	10	X						
Perlodes microcephala (Pictet, 1833)	4	X						
Perlodes microcephalus (Pictet, 1833)	5	X						
Skwala americana (Klapálek, 1912)	2		X					
● PTERONARCYIDAE								
Pteronarcella badia (Hagen, 1874)	1		X					

SPECIES	SPECIMENS	PA	NA	NT	OR	ET	AU	TYPE MATERIAL
<i>Pteronarcella regularis</i> (Hagen, 1874)	15		X					
<i>Pteronarcys californica</i> Newport, 1848	26		X					
<i>Pteronarcys dorsata</i> (Say, 1823)	3		X					
● STYLOPERLIDAE								
<i>Cerconychia brunnea</i> Klapálek, 1913	3				X			<i>Cerconychia brunnea</i> Klapálek, 1913, lectotype, 1 paralectotype
<i>Cerconychia livida</i> Klapálek, 1913	6				X			<i>Cerconychia livida</i> Klapálek, 1913, lectotype, 5 paralectotypes
● TAENIOPTERYGIDAE								
<i>Brachyptera braueri</i> (Klapálek, 1900)	1	X						
<i>Brachyptera monilicornis</i> (Pictet, 1841)	2	X						
<i>Brachyptera risi</i> (Morton, 1896)	2	X						
<i>Brachyptera seticornis</i> (Klapálek, 1902)	1	X						
<i>Brachyptera spec.</i>	1	X						
<i>Doddsia occidentalis</i> (Banks, 1900)	2		X					
<i>Rhabdiopteryx hamulata</i> (Klapálek, 1902)	1	X						
<i>Rhabdiopteryx neglecta</i> (Albarda, 1889)	7	X						
<i>Strophopteryx fasciata</i> (Burmeister, 1839)	2		X					
<i>Taenionema pacificum</i> (Banks, 1900)	4		X					
<i>Taenionema pallidum</i> (Banks, 1902)	1		X					
<i>Taeniopteryx nebulosa</i> (Linné, 1758)	21	X						
<i>Taeniopteryx nivalis</i> Fitch, 1847	2		X					