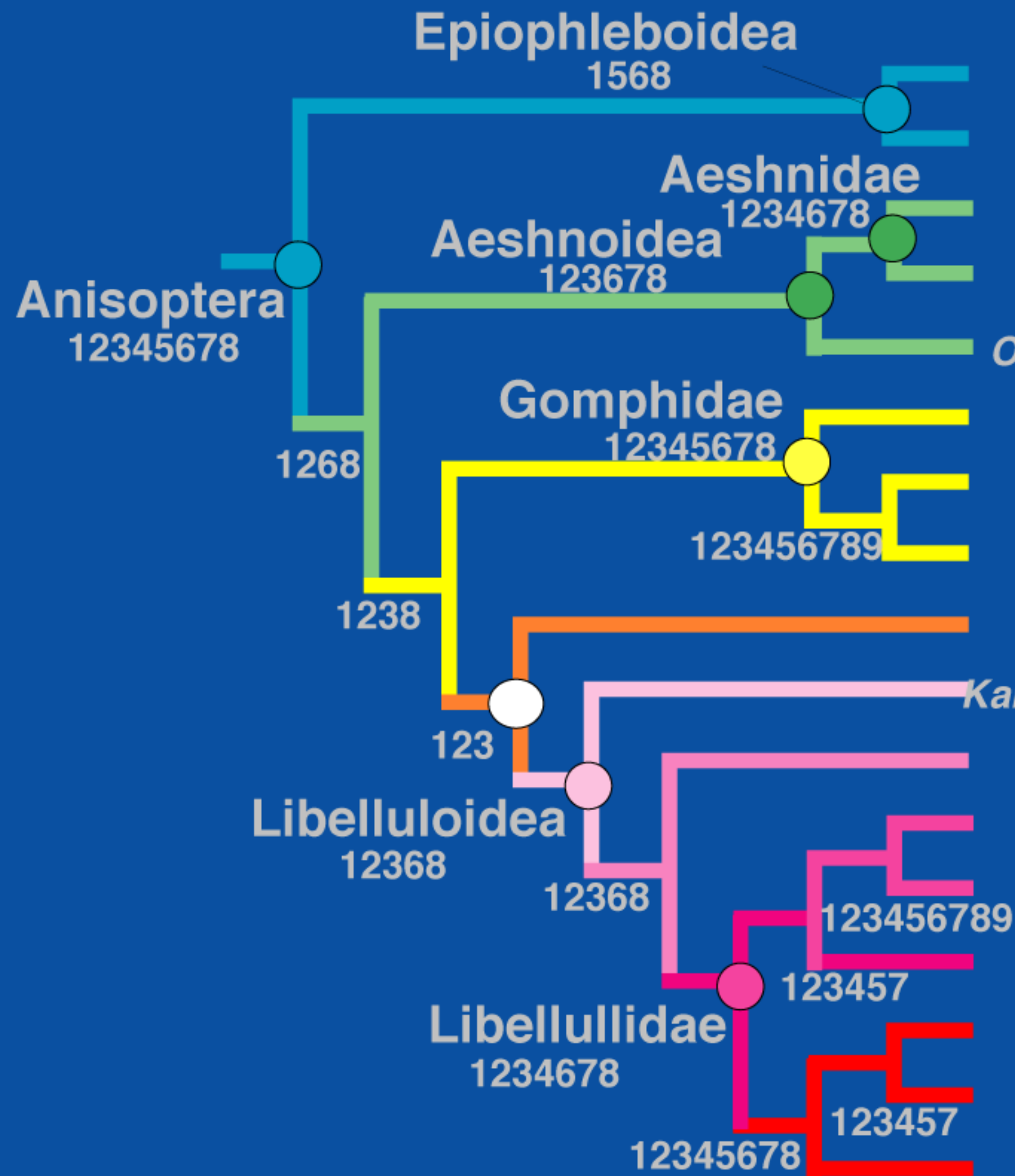
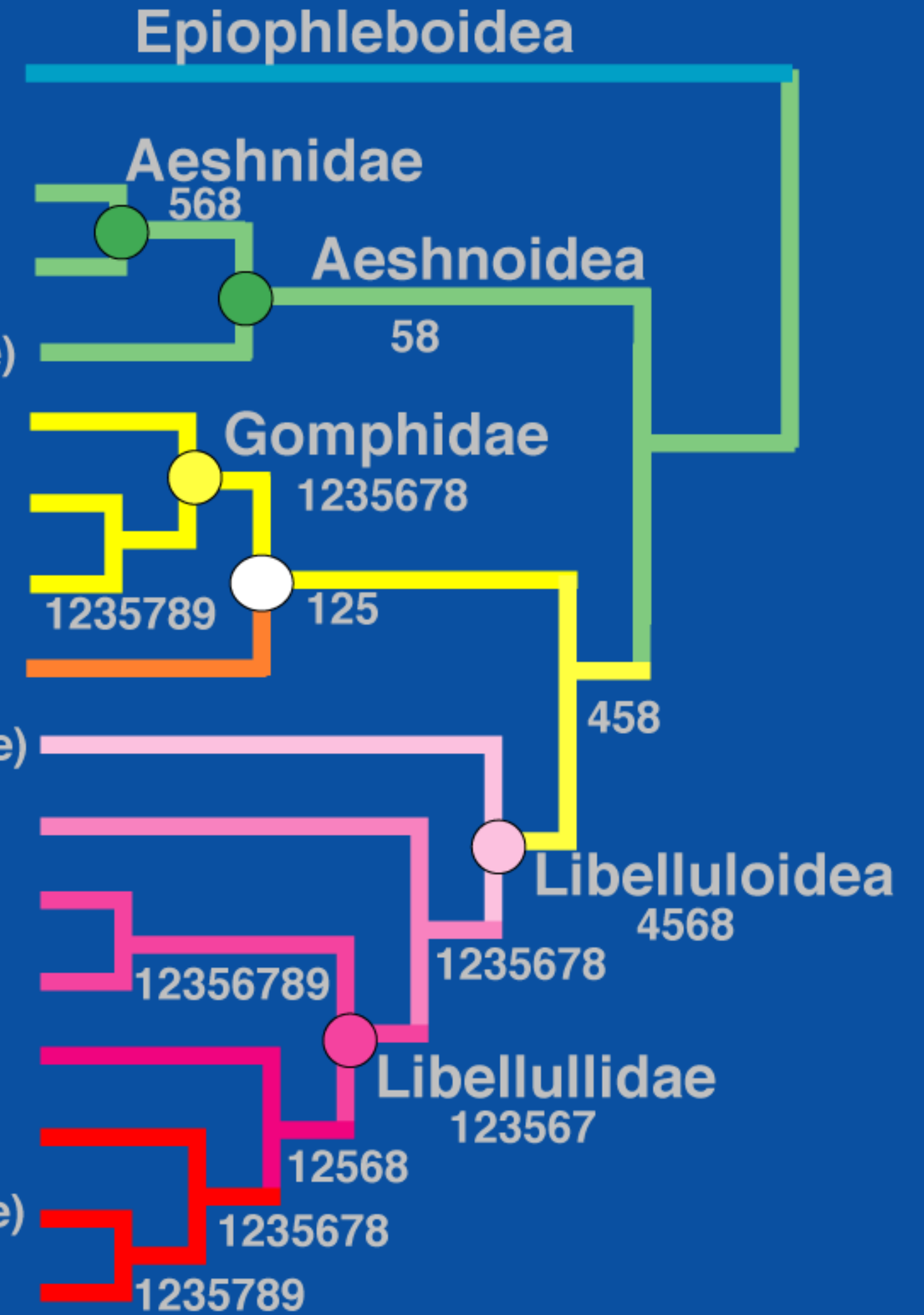


rRNA-MP



- Epiophlebia*
- Gomphaeschna*
- Anax*
- Ophiopetalia* (Austropetalidae)
- Ophiogomphus*
- Gomphus*
- Arigomphus*
- Tachopteryx* (Petaluridae)
- Kalyptogaster* (Cordulegastridae)
- Neopetalia* (Neopetalidae)
- Didymops* (Macromiinae)
- Macromia* (Macromiinae)
- Tetragonuria* (Corduliinae)
- Sympetrum* (Sympetrenae)
- Celithemis* (Leucorrhiniinae)
- Libullula* (Libellulinae)

EF1alpha-ML



KEY:

1=MP	5=ML
2=WP: Successive	6=Morphology
3=WP: Upweight tv/aa	7=LogDet
4=WP: Subst. Freq.	8=Combined data
	9=amino acids

● =weak node