

Fig. S1. Maximum Likelihood (ML) consensus tree reconstructed for *Alainites* spp. (Baetidae). Deeper nodes are labelled above branches with Maximum Likelihood bootstrap support (BS) and under branches with Bayesian posterior probability (PP) only for BS > 50 and PP > 0.5. Tip labels: the first two letters indicate the taxon name (AL = *Alainites*; BA = *Baetis* gr. *alpinus*). Two digit code: sample number. Last group of letters: origin of the material (CO = Corsica; SA = Sardinia; FR(ME) = France Mercantour; FR(MV) = France Mont Ventoux; IT(AP) = Italy Appeninno; IT(LI) = Italy Liguria; IT(TO) = Italy Toscana; CAN = Canary Islands; CH = Switzerland; FR = France; HU = Hungary; TU = Tunisia).

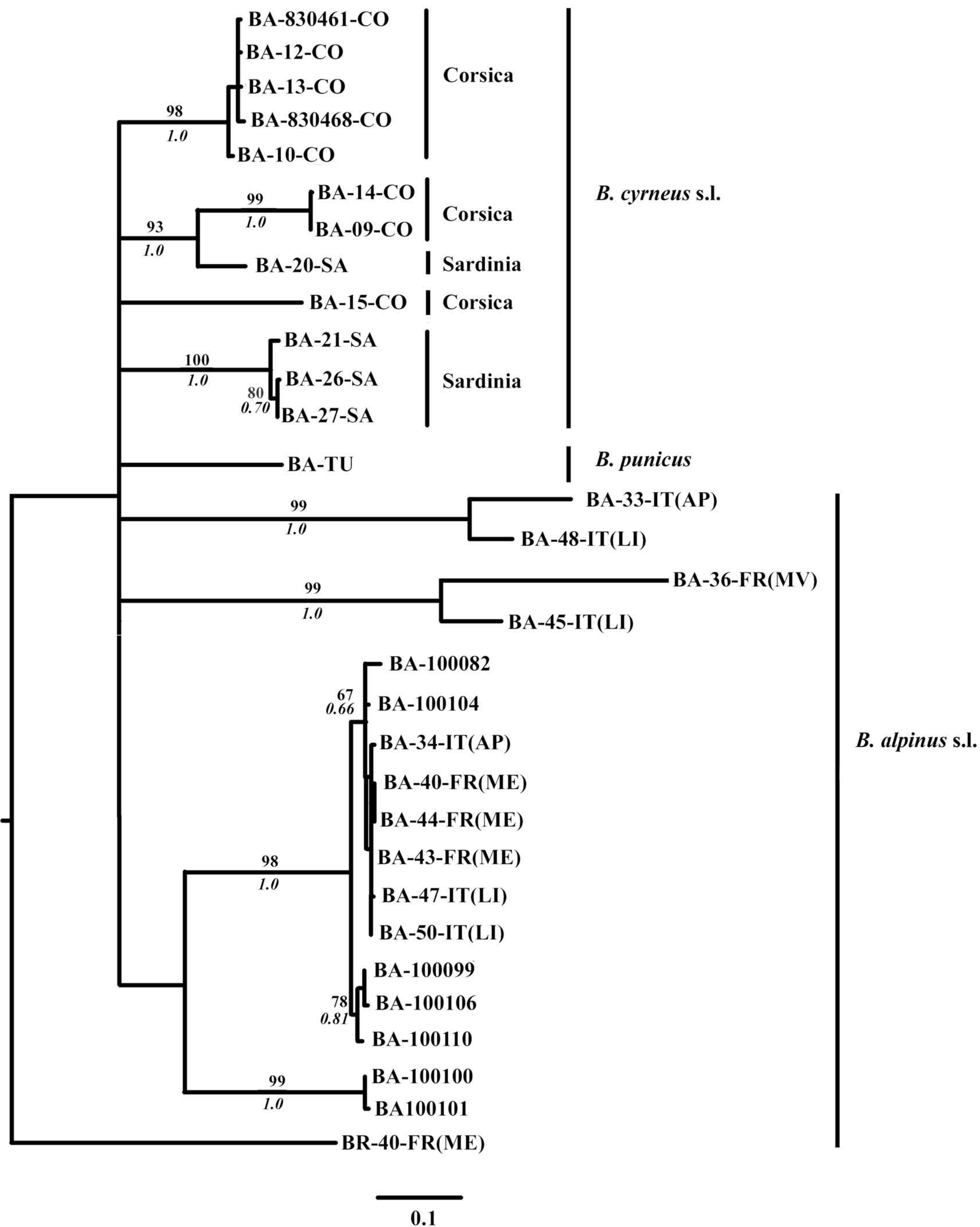


Fig. S2. Maximum Likelihood (ML) consensus tree reconstructed for *Baetis* gr. *alpinus* (Baetidae). Deeper nodes are labelled above branches with Maximum Likelihood bootstrap support (BS) and under branches with Bayesian posterior probability (PP) only for BS > 50 and PP > 0.5. Tip labels: the first two letters indicate the taxon name (BA = *Baetis* gr. *alpinus*; BR = *Baetis* gr. *rhodani*). For other codes see Fig. S1. Other tip labels refer to additional material (GenBank and unpublished data).

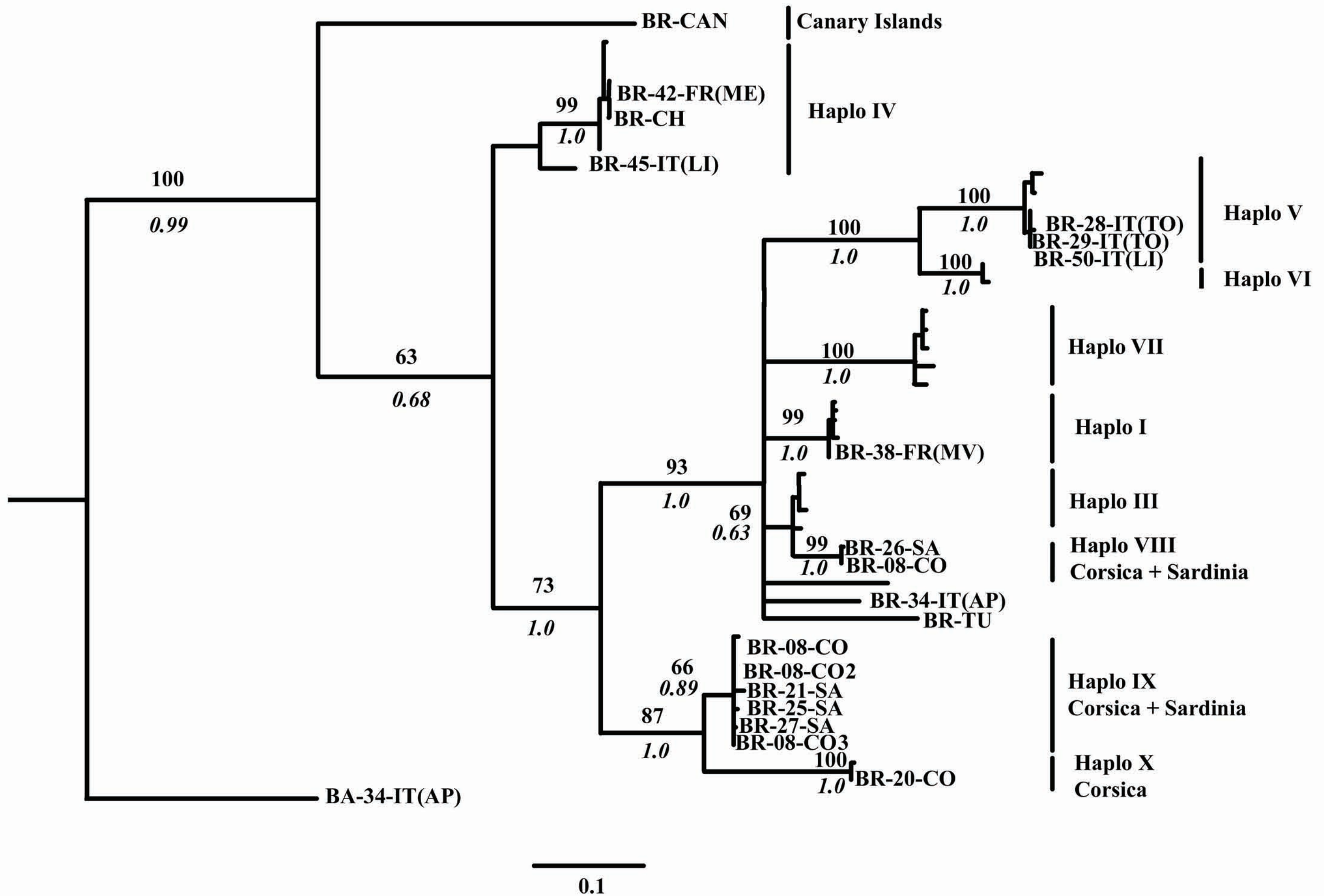


Fig. S3. Maximum Likelihood (ML) consensus tree reconstructed for *Baetis gr. rhodani* (Baetidae). Deeper nodes are labelled above the branch with Maximum Likelihood bootstrap support (BS) and under the branch with Bayesian posterior probability (PP) only for BS > 50 and PP > 0.5. Tips labels are generated as follows: Two first letters indicated the taxon name (BR = *Baetis gr. rhodani*; BA = *Baetis gr. alpinus*). Other codes see Fig. S1. Tip without labels refer to additional material (GenBank and unpublished data).

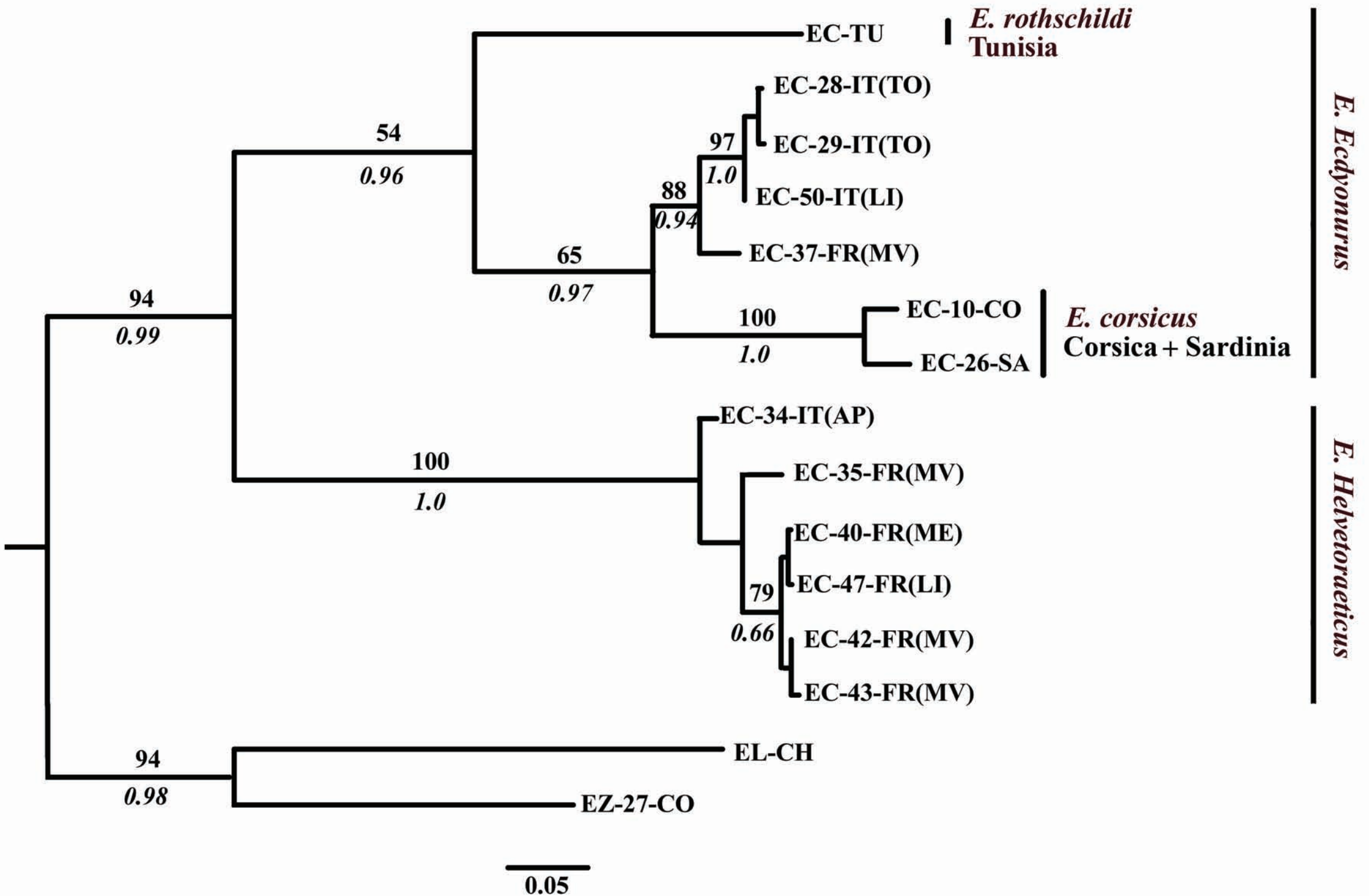


Fig. S4. Maximum Likelihood (ML) consensus tree reconstructed for *Ecdyonurus* spp. (Heptageniidae). Deeper nodes are labelled above the branch with Maximum Likelihood bootstrap support (BS) and under the branch with Bayesian posterior probability (PP) only for BS > 50 and PP > 0.5. Tips labels are generated as followed: Two first letters indicated the taxon name (EC = *Ecdyonurus* spp.; EL = *Electrogena* sp.; EZ = *Electrogena zebrata*). Other codes see Fig. S1.

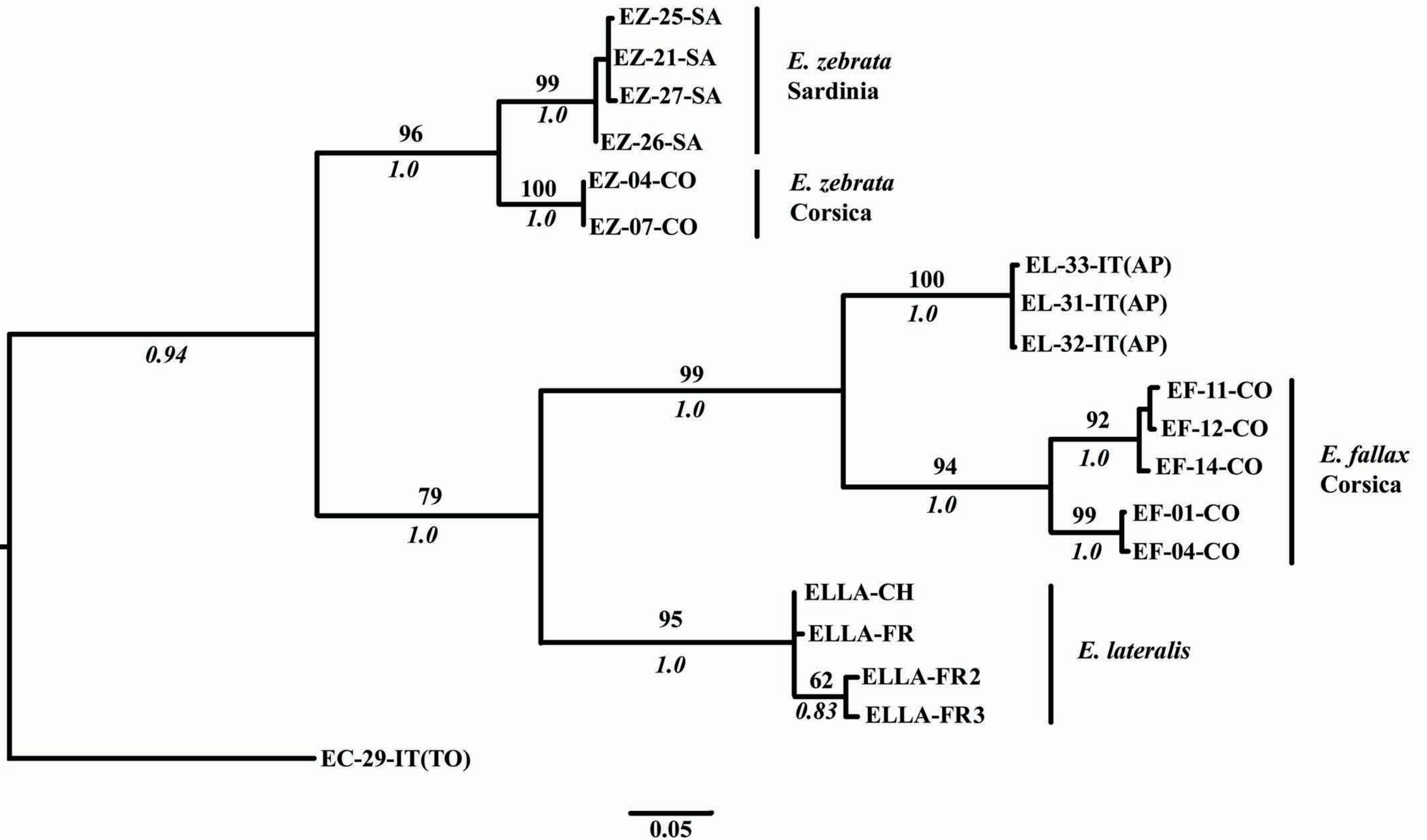


Fig. S5. Maximum Likelihood (ML) consensus tree reconstructed for *Electrogena* spp. (Heptageniidae). Deeper nodes are labelled above branch with Maximum Likelihood bootstrap support (BS) and under the branch with Bayesian posterior probability (PP) only for BS > 50 and PP > 0.5. Tips labels are generated as followed: Two first letters indicated the taxon name (EF = *Electrogena fallax*; EZ = *Electrogena zebrata*; ELLA = *Electrogena lateralis*; EL = *Electrogena* spp.). Other codes see Fig. S1.

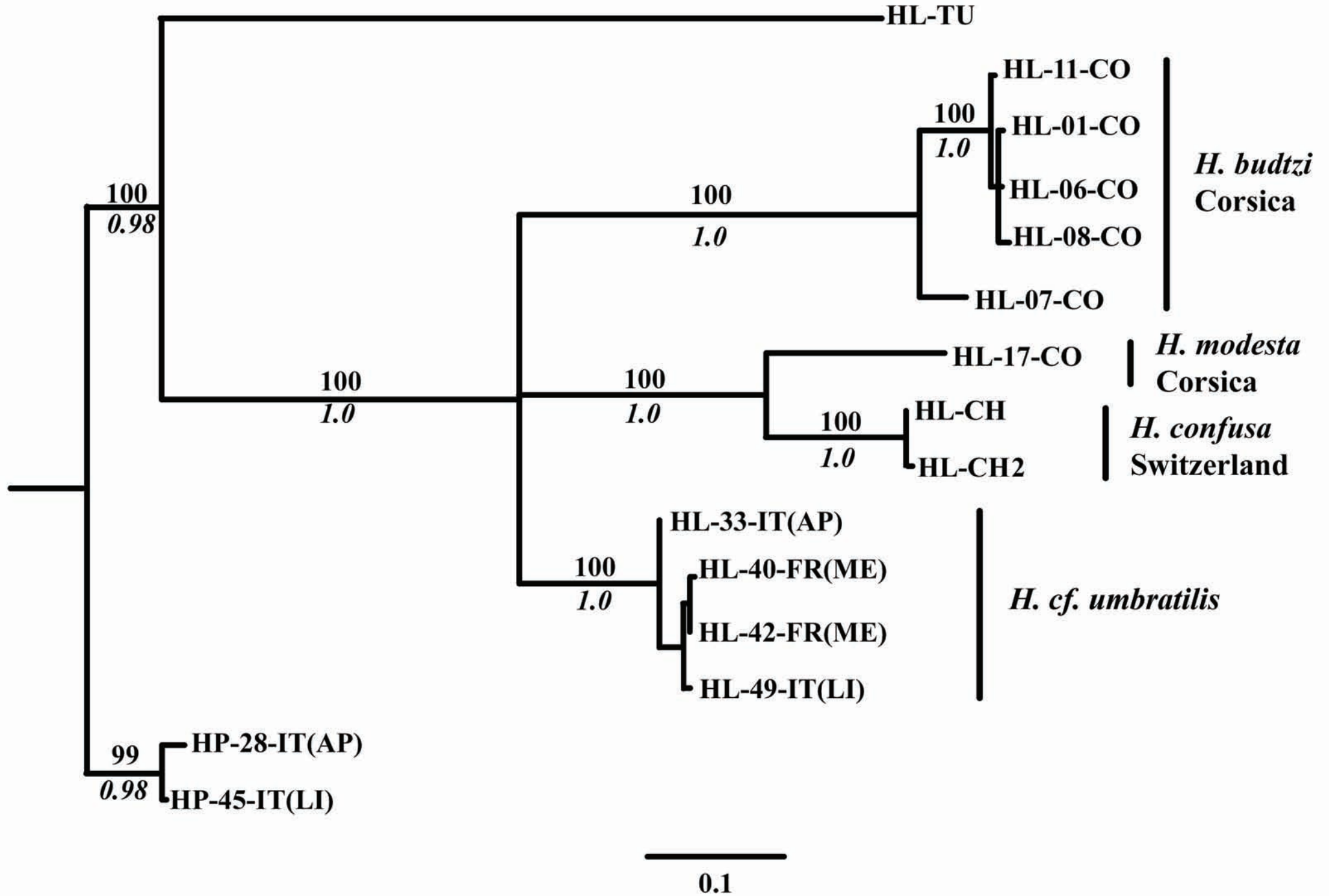


Fig. S6. Maximum Likelihood (ML) consensus tree reconstructed for *Habroleptoides* spp. (Leptophlebiidae). Deeper nodes are labelled above the branch with Maximum Likelihood bootstrap support (BS) and under the branch with Bayesian posterior probability (PP) only for BS > 50 and PP > 0.5. Tips labels are generated as followed: Two first letters indicated the taxon name (HL = *Habroleptoides* spp.; HP = *Habrophlebia* spp.). Other codes see Fig. S1.

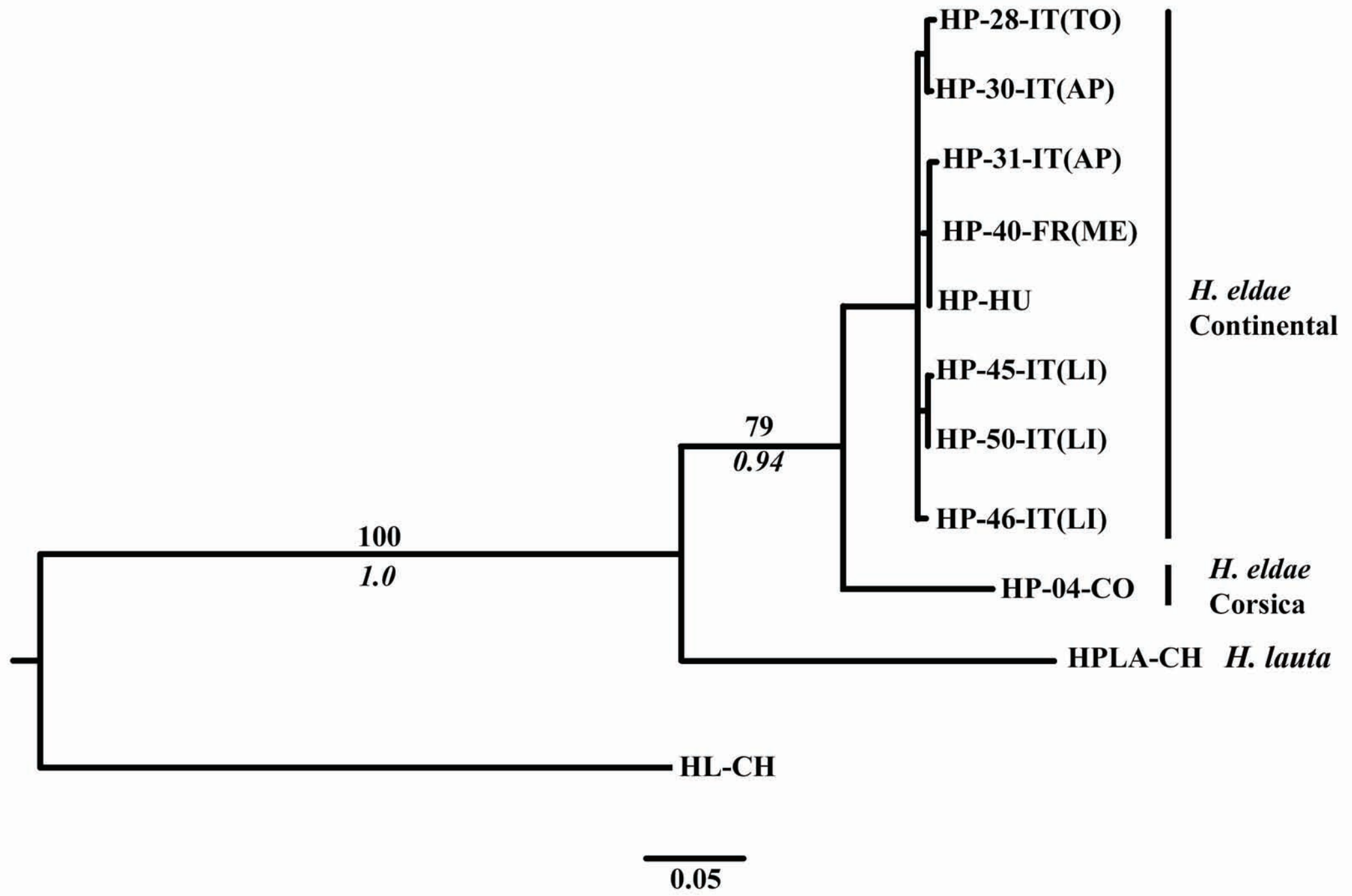


Fig. S7. Maximum Likelihood (ML) consensus tree reconstructed for *Habrophlebia* spp. (Leptophlebiidae). Deeper nodes are labelled above the branch with Maximum Likelihood bootstrap support (BS) and under the branch with Bayesian posterior probability (PP) only for BS > 50 and PP > 0.5. Tips labels are generated as followed: Two first letters indicated the taxon name (HP = *Habrophlebia eldae*; HPLA = *Habrophlebia lauta*; HL = *Habroleptoides* sp.). Other codes see Fig. S1.

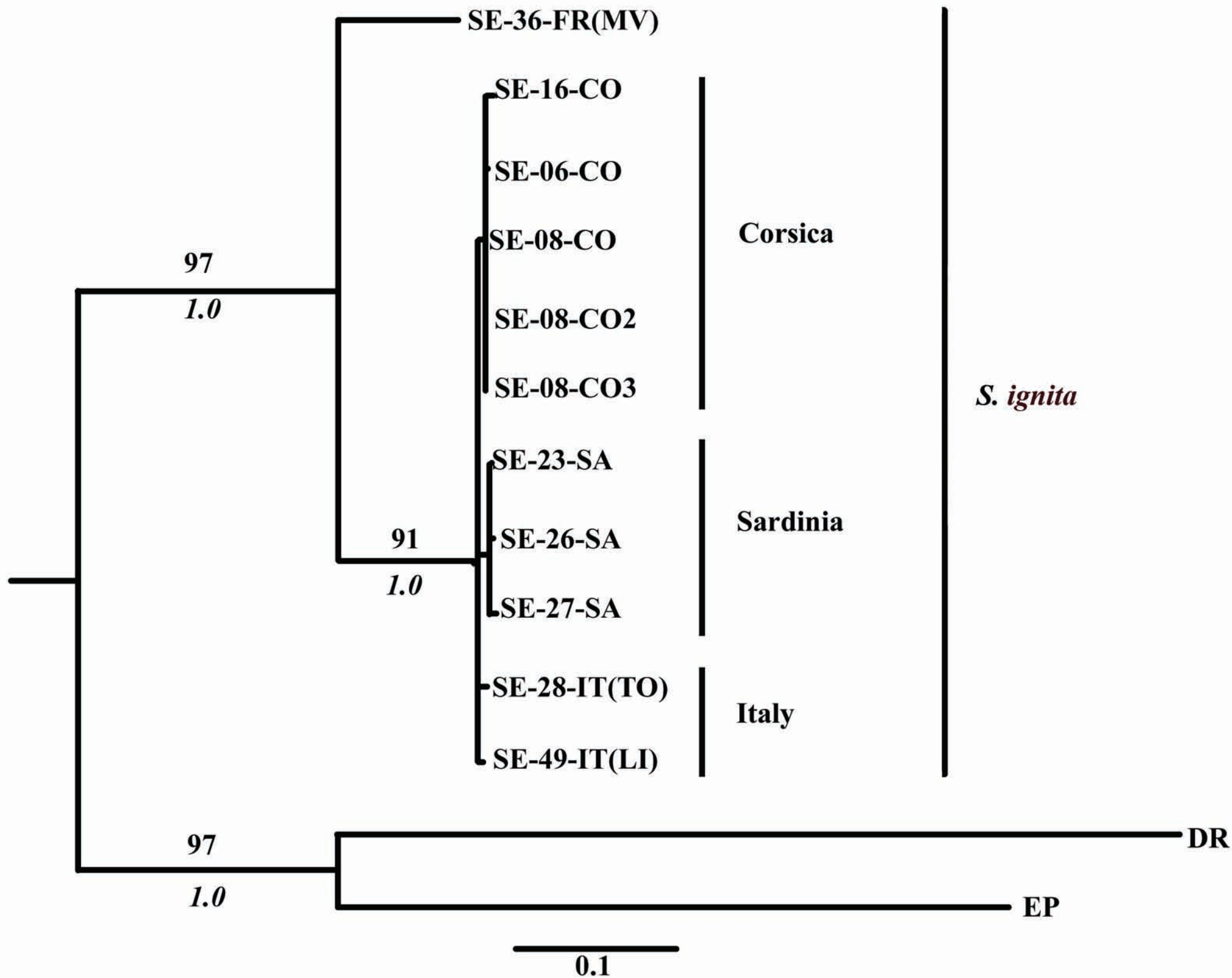


Fig. S8. Maximum Likelihood (ML) consensus tree reconstructed for *Serratella ignita* (Ephemerellidae). Deeper nodes are labelled above the branch with Maximum Likelihood bootstrap support (BS) and under the branch with Bayesian posterior probability (PP) only for BS > 50 and PP > 0.5. Tips labels are generated as followed: Two first letters indicated the taxon name (SE = *Serratella ignita*; DR = *Drunella* sp.; EP = *Ephemerella* sp.). Other codes see Fig. S1.