

Electronic Supplement Figures:

Figure S1. Best scoring Maximum Likelihood tree for combined dataset of West Mediterranean Ditomina. The ML tree was selected with 100 independent searches, and bootstrap values estimated with 1000 bootstrap pseudo-replicates.

Figure S2. Best scoring Maximum Likelihood tree for the *cox1-bc* dataset of West Mediterranean Ditomina. The ML tree was selected with 100 independent searches, and bootstrap values estimated with 1000 bootstrap pseudo-replicates.

Figure S3. Best scoring Maximum Likelihood tree for *its2* dataset of West Mediterranean Ditomina. The ML tree was selected with 100 independent searches, and bootstrap values estimated with 1000 bootstrap pseudo-replicates.

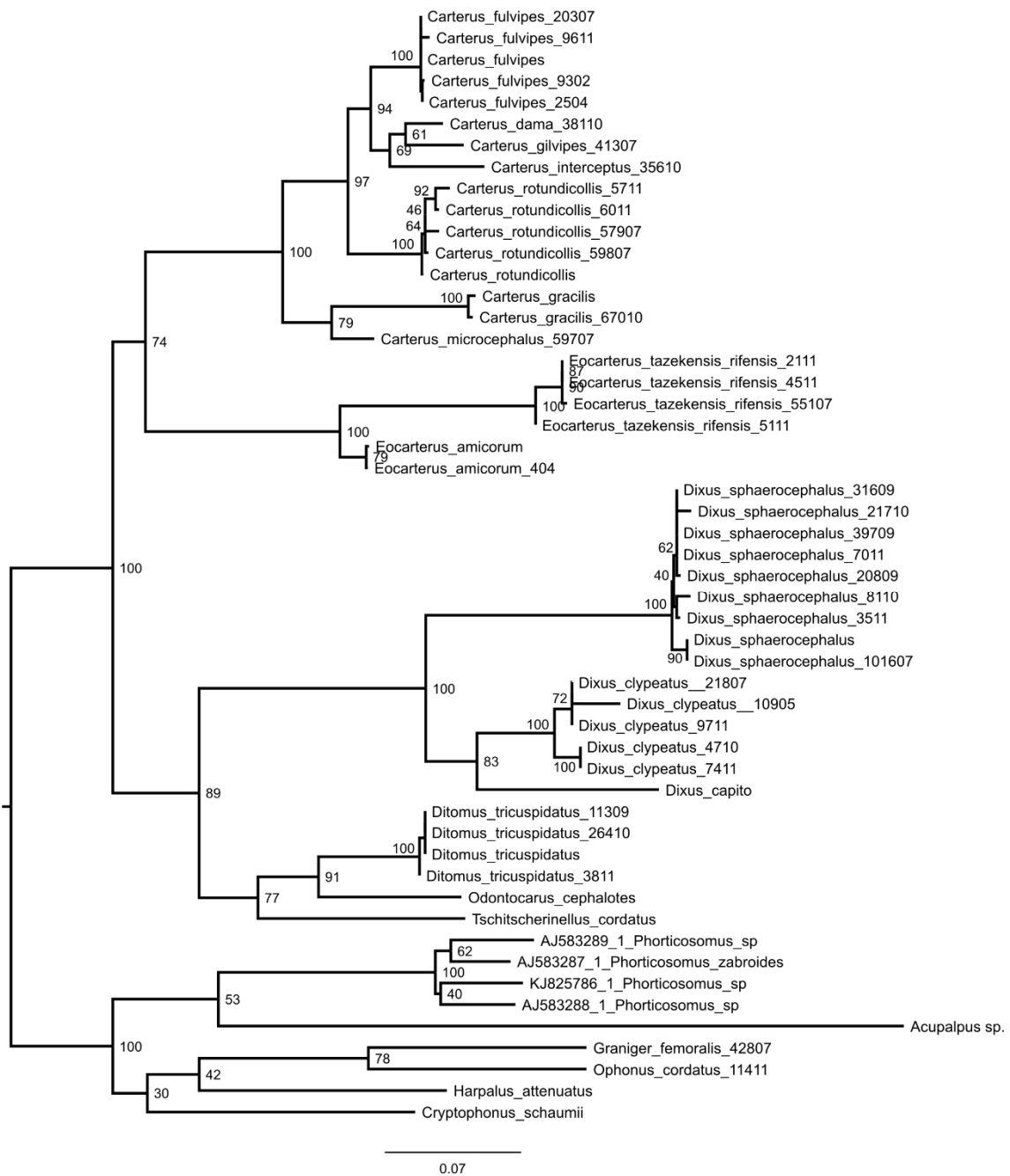


Figure S1. Best scoring Maximum Likelihood tree for combined dataset of West Mediterranean Ditomina. The ML tree was selected with 100 independent searches, and bootstrap values estimated with 1000 bootstrap pseudo-replicates.

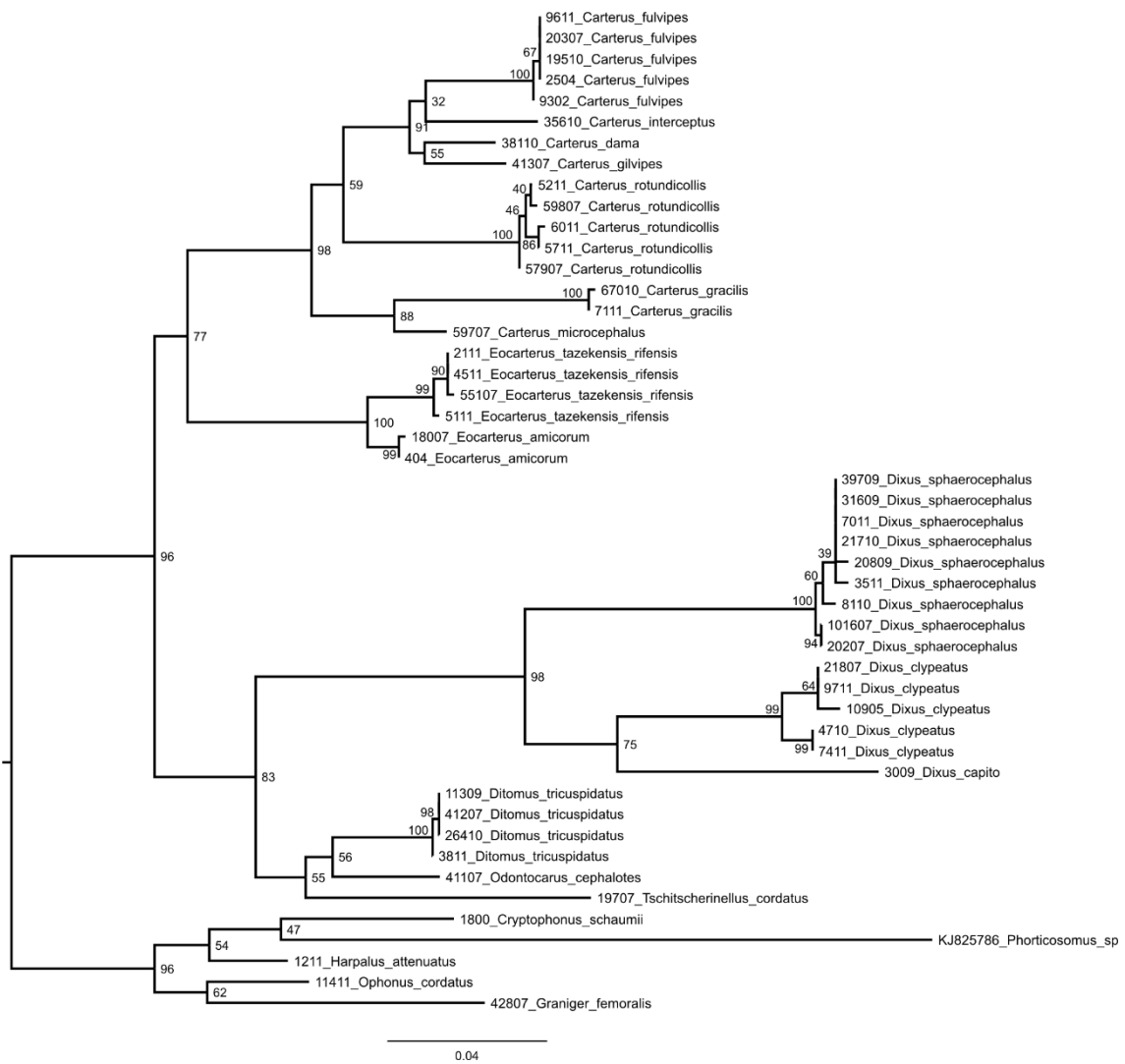


Figure S2. Best scoring Maximum Likelihood tree for the *coxI-bc* dataset of West Mediterranean Ditomina. The ML tree was selected with 100 independent searches, and bootstrap values estimated with 1000 bootstrap pseudo-replicates.



Figure S3. Best scoring Maximum Likelihood tree for *its2* dataset of West Mediterranean Ditomina. The ML tree was selected with 100 independent searches, and bootstrap values estimated with 1000 bootstrap pseudo-replicates.